

PALM2 Antibody (monoclonal) (M09)

Mouse monoclonal antibody raised against a partial recombinant PALM2.

Catalog # AT3177a

Product Information

Application	WB, E
Primary Accession	Q8IXS6
Other Accession	NM_053016
Reactivity	Human, Rat
Host	mouse
Clonality	monoclonal
Isotype	IgG2a Kappa
Clone Names	1A8

Additional Information

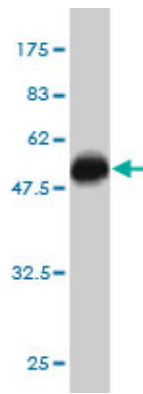
Other Names	Paralemmin-2, PALM2
Target/Specificity	PALM2 (NP_443749, 321 a.a. ~ 411 a.a) partial recombinant protein with GST tag. MW of the GST tag alone is 26 kDa.
Dilution	WB~~1:500~1000 E~~N/A
Format	Clear, colorless solution in phosphate buffered saline, pH 7.2 .
Storage	Store at -20°C or lower. Aliquot to avoid repeated freezing and thawing.
Precautions	PALM2 Antibody (monoclonal) (M09) is for research use only and not for use in diagnostic or therapeutic procedures.

References

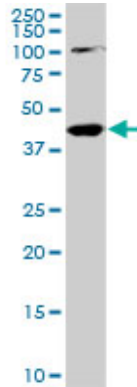
Personalized smoking cessation: interactions between nicotine dose, dependence and quit-success genotype score. Rose JE, et al. Mol Med, 2010 Jul-Aug. PMID 20379614. A Three-Stage Genome-Wide Association Study of General Cognitive Ability: Hunting the Small Effects. Davis OS, et al. Behav Genet, 2010 Mar 21. PMID 20306291. Identification of 15 loci influencing height in a Korean population. Kim JJ, et al. J Hum Genet, 2010 Jan. PMID 19893584. Candidate gene/loci studies in cleft lip/palate and dental anomalies finds novel susceptibility genes for clefts. Vieira AR, et al. Genet Med, 2008 Sep. PMID 18978678. The status, quality, and expansion of the NIH full-length cDNA project: the Mammalian Gene Collection (MGC). Gerhard DS, et al. Genome Res, 2004 Oct. PMID 15489334.

Images

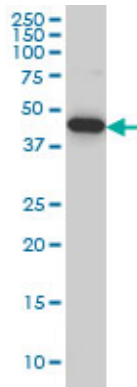
Antibody Reactive Against Recombinant Protein. Western Blot detection against Immunogen (35.75 kDa) .



PALM2 monoclonal antibody (M09), clone 1A8. Western Blot analysis of PALM2 expression in PC-12 (Cat # AT3177a)

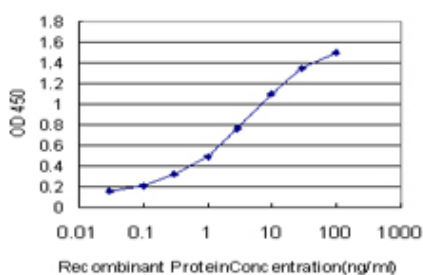
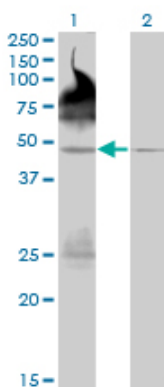


PALM2 monoclonal antibody (M09), clone 1A8 Western Blot analysis of PALM2 expression in HeLa S3 NE (Cat # AT3177a)



Western Blot analysis of PALM2 expression in transfected 293T cell line by PALM2 monoclonal antibody (M09), clone 1A8.

Lane 1: PALM2 transfected lysate(42.2 KDa).
Lane 2: Non-transfected lysate.



Detection limit for recombinant GST tagged PALM2 is approximately 0.03ng/ml as a capture antibody.

Please note: All products are 'FOR RESEARCH USE ONLY. NOT FOR USE IN DIAGNOSTIC OR THERAPEUTIC PROCEDURES'.