

PAPSS2 Antibody (monoclonal) (M07)

Mouse monoclonal antibody raised against a partial recombinant PAPSS2.

Catalog # AT3179a

Product Information

Application	WB, IHC, IF, E
Primary Accession	O95340
Other Accession	NM_004670
Reactivity	Human, Mouse
Host	mouse
Clonality	monoclonal
Isotype	IgG1 Kappa
Clone Names	2A8
Calculated MW	69501

Additional Information

Gene ID	9060
Other Names	Bifunctional 3'-phosphoadenosine 5'-phosphosulfate synthase 2, PAPS synthase 2, PAPSS 2, Sulfurylase kinase 2, SK 2, SK2, Sulfate adenylyltransferase, ATP-sulfurylase, Sulfate adenylate transferase, SAT, Adenylyl-sulfate kinase, 3'-phosphoadenosine-5'-phosphosulfate synthase, APS kinase, Adenosine-5'-phosphosulfate 3'-phosphotransferase, Adenylylsulfate 3'-phosphotransferase, PAPSS2, ATPSK2
Target/Specificity	PAPSS2 (NP_004661, 513 a.a. ~ 612 a.a) partial recombinant protein with GST tag. MW of the GST tag alone is 26 KDa.
Dilution	WB~~1:500~1000 IHC~~1:100~500 IF~~1:50~200 E~~N/A
Format	Clear, colorless solution in phosphate buffered saline, pH 7.2 .
Storage	Store at -20°C or lower. Aliquot to avoid repeated freezing and thawing.
Precautions	PAPSS2 Antibody (monoclonal) (M07) is for research use only and not for use in diagnostic or therapeutic procedures.

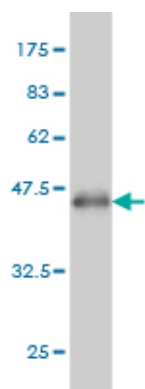
Background

Sulfation is a common modification of endogenous (lipids, proteins, and carbohydrates) and exogenous (xenobiotics and drugs) compounds. In mammals, the sulfate source is 3'-phosphoadenosine 5'-phosphosulfate (PAPS), created from ATP and inorganic sulfate. Two different tissue isoforms encoded by different genes synthesize PAPS. This gene encodes one of the two PAPS synthetases. Defects in this gene cause the Pakistani type of spondyloepimetaphyseal dysplasia. Two alternatively spliced transcript variants that encode different isoforms have been described for this gene.

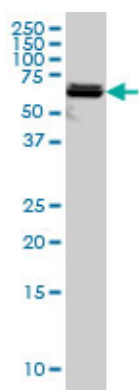
References

1.PAPSS2 Promotes Alkaline Phosphates Activity and Mineralization of Osteoblastic MC3T3-E1 Cells by Crosstalk and Smads Signal Pathways.Wang W, Li F, Wang K, Cheng B, Guo X.PLoS One. 2012;7(8):e43475. Epub 2012 Aug 16.

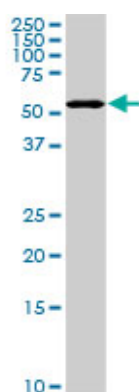
Images



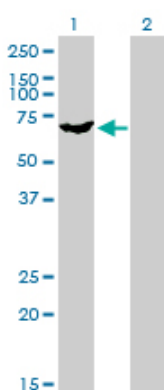
Antibody Reactive Against Recombinant Protein.Western Blot detection against Immunogen (36.74 KDa) .



PAPSS2 monoclonal antibody (M07), clone 2A8 Western Blot analysis of PAPSS2 expression in A-431 ((Cat # AT3179a)

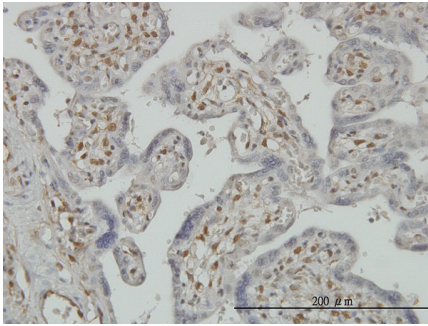


PAPSS2 monoclonal antibody (M07), clone 2A8. Western Blot analysis of PAPSS2 expression in NIH/3T3 ((Cat # AT3179a)

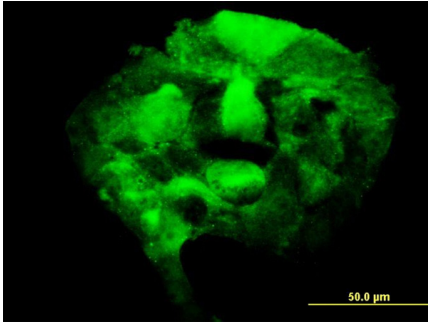


Western Blot analysis of PAPSS2 expression in transfected 293T cell line by PAPSS2 monoclonal antibody (M07), clone 2A8.

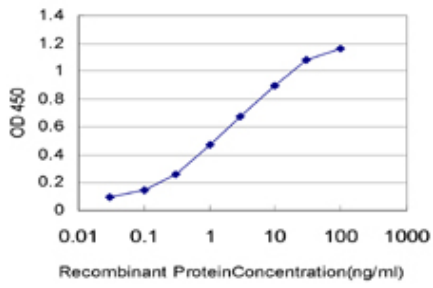
Lane 1: PAPSS2 transfected lysate(69.5 KDa).
Lane 2: Non-transfected lysate.



Immunoperoxidase of monoclonal antibody to PAPSS2 on formalin-fixed paraffin-embedded human placenta. [antibody concentration 3 ug/ml]



Immunofluorescence of monoclonal antibody to PAPSS2 on A-431 cell. [antibody concentration 10 ug/ml]



Detection limit for recombinant GST tagged PAPSS2 is approximately 0.03ng/ml as a capture antibody.

Please note: All products are 'FOR RESEARCH USE ONLY. NOT FOR USE IN DIAGNOSTIC OR THERAPEUTIC PROCEDURES'.