

PARVB Antibody (monoclonal) (M01)

Mouse monoclonal antibody raised against a full length recombinant PARVB.

Catalog # AT3184a

Product Information

Application	WB, E
Primary Accession	Q9HBI1
Other Accession	BC046103
Reactivity	Human
Host	mouse
Clonality	monoclonal
Isotype	IgG2b kappa
Clone Names	4A11
Calculated MW	41714

Additional Information

Gene ID	29780
Other Names	Beta-parvin, Affixin, PARVB
Target/Specificity	PARVB (AAH46103, 1 a.a. ~ 350 a.a) full-length recombinant protein with GST tag. MW of the GST tag alone is 26 KDa.
Dilution	WB~~1:500~1000 E~~N/A
Format	Clear, colorless solution in phosphate buffered saline, pH 7.2 .
Storage	Store at -20°C or lower. Aliquot to avoid repeated freezing and thawing.
Precautions	PARVB Antibody (monoclonal) (M01) is for research use only and not for use in diagnostic or therapeutic procedures.

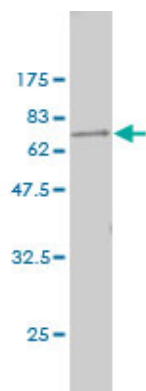
Background

Members of the parvin family, including PARVB, are actin-binding proteins associated with focal contacts.

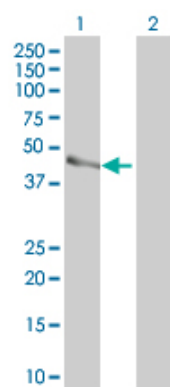
References

1.Expression of parvin-beta is a prognostic factor for patients with urothelial cell carcinoma of the upper urinary tract.Wu CF, Ng KF, Chen CS, Chang PL, Chuang CK, Weng WH, Liao SK, Pang ST.Br J Cancer. 2010 Sep 7;103(6):852-60. Epub 2010 Aug 24.

Images



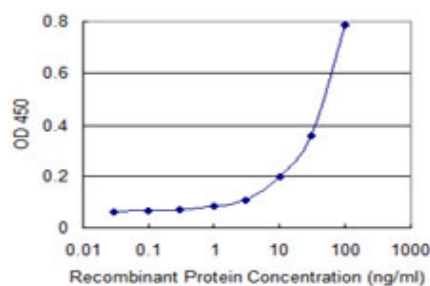
Antibody Reactive Against Recombinant Protein. Western Blot detection against Immunogen (64.24 KDa) .



Western Blot analysis of PARVB expression in transfected 293T cell line by PARVB monoclonal antibody (M01), clone 4A11.

Lane 1: PARVB transfected lysate(40.25 KDa).

Lane 2: Non-transfected lysate.



Detection limit for recombinant GST tagged PARVB is 1 ng/ml as a capture antibody.

Please note: All products are 'FOR RESEARCH USE ONLY. NOT FOR USE IN DIAGNOSTIC OR THERAPEUTIC PROCEDURES'.