

PAX2 Antibody (monoclonal) (M02)

Mouse monoclonal antibody raised against a partial recombinant PAX2.

Catalog # AT3189a

Product Information

Application	WB
Primary Accession	Q02962
Other Accession	NM_000278
Reactivity	Human, Rat
Host	mouse
Clonality	monoclonal
Isotype	IgG2a Kappa
Clone Names	2E5
Calculated MW	44706

Additional Information

Gene ID	5076
Other Names	Paired box protein Pax-2, PAX2
Target/Specificity	PAX2 (NP_000269, 194 a.a. ~ 303 a.a) partial recombinant protein with GST tag. MW of the GST tag alone is 26 KDa.
Dilution	WB~~1:500~1000
Format	Clear, colorless solution in phosphate buffered saline, pH 7.2 .
Storage	Store at -20°C or lower. Aliquot to avoid repeated freezing and thawing.
Precautions	PAX2 Antibody (monoclonal) (M02) is for research use only and not for use in diagnostic or therapeutic procedures.

Background

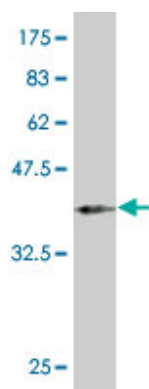
PAX2 encodes paired box gene 2, one of many human homologues of the *Drosophila melanogaster* gene *prd*. The central feature of this transcription factor gene family is the conserved DNA-binding paired box domain. PAX2 is believed to be a target of transcriptional suppression by the tumor suppressor gene WT1. Mutations within PAX2 have been shown to result in optic nerve colobomas and renal hypoplasia. Alternative splicing of this gene results in multiple transcript variants.

References

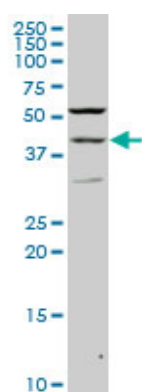
1.c-Jun is essential for the induction of Il-1 β gene expression in in vitro activated Bergmann glial cells. Albanito L, Reddy CE, Musti AM. *Glia*. 2011 Sep 21. doi: 10.1002/glia.21244. 2.The transcription factor

PAX2 regulates ADAM10 expression in renal cell carcinoma. Doberstein K, Pfeilschifter J, Gutwein P. Carcinogenesis. 2011 Sep 16.

Images



Antibody Reactive Against Recombinant Protein. Western Blot detection against Immunogen (37.84 kDa) .



PAX2 monoclonal antibody (M02), clone 2E4 Western Blot analysis of PAX2 expression in PC-12 ((Cat # AT3189a)

Please note: All products are 'FOR RESEARCH USE ONLY. NOT FOR USE IN DIAGNOSTIC OR THERAPEUTIC PROCEDURES'.