

PBX2 Antibody (monoclonal) (M01)

Mouse monoclonal antibody raised against a partial recombinant PBX2.

Catalog # AT3201a

Product Information

Application	WB, IF
Primary Accession	P40425
Other Accession	NM_002586
Reactivity	Human
Host	mouse
Clonality	monoclonal
Isotype	IgG2a Kappa
Clone Names	2E10
Calculated MW	45881

Additional Information

Gene ID	5089
Other Names	Pre-B-cell leukemia transcription factor 2, Homeobox protein PBX2, Protein G17, PBX2, G17
Target/Specificity	PBX2 (NP_002577, 354 a.a. ~ 430 a.a) partial recombinant protein with GST tag. MW of the GST tag alone is 26 KDa.
Dilution	WB~~1:500~1000 IF~~1:50~200
Format	Clear, colorless solution in phosphate buffered saline, pH 7.2 .
Storage	Store at -20°C or lower. Aliquot to avoid repeated freezing and thawing.
Precautions	PBX2 Antibody (monoclonal) (M01) is for research use only and not for use in diagnostic or therapeutic procedures.

Background

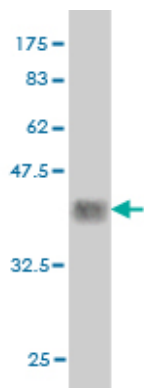
This gene encodes a ubiquitously expressed member of the TALE/PBX homeobox family. It was identified by its similarity to a homeobox gene which is involved in t(1;19) translocation in acute pre-B-cell leukemias. This protein is a transcriptional activator which binds to the TLX1 promoter. The gene is located within the major histocompatibility complex (MHC) on chromosome 6.

References

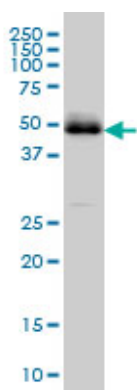
Variation at the NFATC2 Locus Increases the Risk of Thiazolinedione-Induced Edema in the Diabetes REduction Assessment with ramipril and rosiglitazone Medication (DREAM) Study. Bailey SD, et al. Diabetes

Care, 2010 Jul 13. PMID 20628086. Examination of genetic polymorphisms in newborns for signatures of sex-specific prenatal selection. Ucisik-Akkaya E, et al. Mol Hum Reprod, 2010 Oct. PMID 20587610. Identification of type 2 diabetes-associated combination of SNPs using support vector machine. Ban HJ, et al. BMC Genet, 2010 Apr 23. PMID 20416077. Gene-centric association signals for lipids and apolipoproteins identified via the HumanCVD BeadChip. Talmud PJ, et al. Am J Hum Genet, 2009 Nov. PMID 19913121. High-density SNP screening of the major histocompatibility complex in systemic lupus erythematosus demonstrates strong evidence for independent susceptibility regions. Barcellos LF, et al. PLoS Genet, 2009 Oct. PMID 19851445.

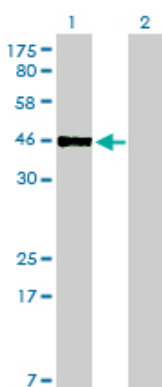
Images



Antibody Reactive Against Recombinant Protein. Western Blot detection against Immunogen (34.21 KDa) .

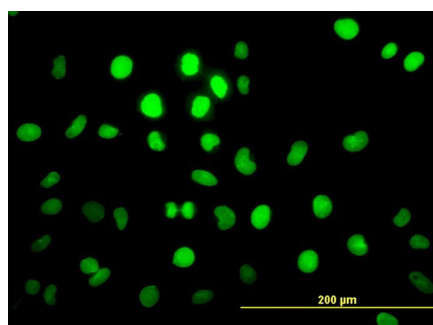


PBX2 monoclonal antibody (M01), clone 2E9 Western Blot analysis of PBX2 expression in HeLa S3 NE (Cat # AT3201a)

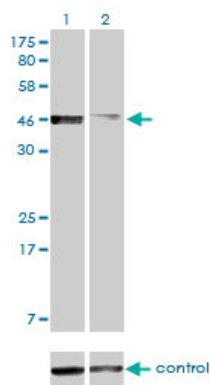


Western Blot analysis of PBX2 expression in transfected 293T cell line by PBX2 monoclonal antibody (M01), clone 2E9.

Lane 1: PBX2 transfected lysate(45.9 KDa).
Lane 2: Non-transfected lysate.



Immunofluorescence of monoclonal antibody to PBX2 on HeLa cell. [antibody concentration 10 ug/ml]



Western blot analysis of PBX2 over-expressed 293 cell line, cotransfected with PBX2 Validated Chimera RNAi (Cat # AT3201a)

Please note: All products are 'FOR RESEARCH USE ONLY. NOT FOR USE IN DIAGNOSTIC OR THERAPEUTIC PROCEDURES'.