

# PCDH1 Antibody (monoclonal) (M01)

Mouse monoclonal antibody raised against a partial recombinant PCDH1.

Catalog # AT3210a

## Product Information

---

|                          |                           |
|--------------------------|---------------------------|
| <b>Application</b>       | WB, IHC, IF, E            |
| <b>Primary Accession</b> | <a href="#">Q08174</a>    |
| <b>Other Accession</b>   | <a href="#">NM_002587</a> |
| <b>Reactivity</b>        | Human                     |
| <b>Host</b>              | mouse                     |
| <b>Clonality</b>         | monoclonal                |
| <b>Isotype</b>           | IgG1 Kappa                |
| <b>Clone Names</b>       | 5D5                       |
| <b>Calculated MW</b>     | 114743                    |

## Additional Information

---

|                           |                                                                                                                     |
|---------------------------|---------------------------------------------------------------------------------------------------------------------|
| <b>Gene ID</b>            | 5097                                                                                                                |
| <b>Other Names</b>        | Protocadherin-1, Cadherin-like protein 1, Protocadherin-42, PC42, PCDH1                                             |
| <b>Target/Specificity</b> | PCDH1 (NP_002578, 62 a.a. ~ 169 a.a) partial recombinant protein with GST tag. MW of the GST tag alone is 26 KDa.   |
| <b>Dilution</b>           | WB~~1:500~1000 IHC~~1:100~500 IF~~1:50~200 E~~N/A                                                                   |
| <b>Format</b>             | Clear, colorless solution in phosphate buffered saline, pH 7.2 .                                                    |
| <b>Storage</b>            | Store at -20°C or lower. Aliquot to avoid repeated freezing and thawing.                                            |
| <b>Precautions</b>        | PCDH1 Antibody (monoclonal) (M01) is for research use only and not for use in diagnostic or therapeutic procedures. |

## Background

---

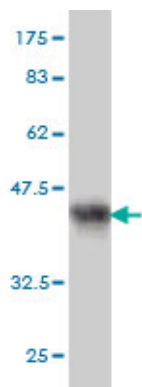
This gene belongs to the protocadherin subfamily within the cadherin superfamily. The encoded protein is a membrane protein found at cell-cell boundaries. It is involved in neural cell adhesion, suggesting a possible role in neuronal development. The protein includes an extracellular region, containing 7 cadherin-like domains, a transmembrane region and a C-terminal cytoplasmic region. Cells expressing the protein showed cell aggregation activity. Alternative splicing occurs in this gene.

## References

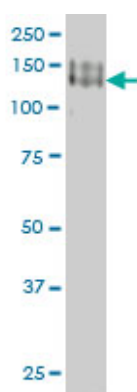
---

1.Identification of PCDH1 as a Novel Susceptibility Gene for Bronchial Hyperresponsiveness.Koppelman GH, Meyers DA, Howard TD, Zheng SL, Hawkins GA, Ampleford EJ, Xu J, Koning H, Bruinenberg M, Nolte IM, van

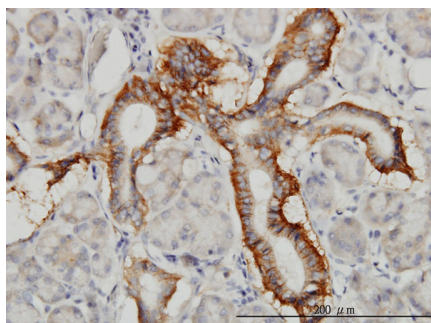
## Images



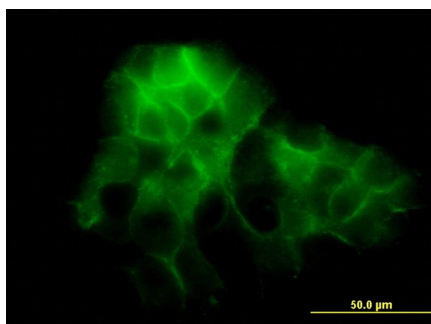
Antibody Reactive Against Recombinant Protein. Western Blot detection against Immunogen (37.62 KDa) .



PCDH1 monoclonal antibody (M01), clone 5D5 Western Blot analysis of PCDH1 expression in A-431 (Cat # AT3210a )

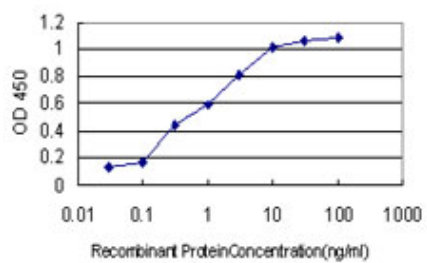


Immunoperoxidase of monoclonal antibody to PCDH1 on formalin-fixed paraffin-embedded human salivary gland. [antibody concentration 3 ug/ml]



Immunofluorescence of monoclonal antibody to PCDH1 on A-431 cell. [antibody concentration 10 ug/ml]

Detection limit for recombinant GST tagged PCDH1 is approximately 0.03ng/ml as a capture antibody.



Please note: All products are 'FOR RESEARCH USE ONLY. NOT FOR USE IN DIAGNOSTIC OR THERAPEUTIC PROCEDURES'.