

PCTP Antibody (monoclonal) (M01)

Mouse monoclonal antibody raised against a full length recombinant PCTP.
Catalog # AT3241a

Product Information

Application	WB, E
Primary Accession	Q9UKL6
Other Accession	BC012084
Reactivity	Human
Host	mouse
Clonality	monoclonal
Isotype	IgG2b Kappa
Clone Names	1F9

Additional Information

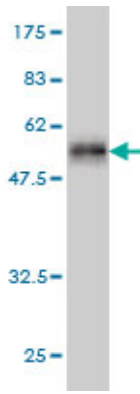
Other Names	Phosphatidylcholine transfer protein, PC-TP, START domain-containing protein 2, StARD2, StAR-related lipid transfer protein 2, PCTP, STARD2
Target/Specificity	PCTP (AAH12084, 1 a.a. ~ 214 a.a) full-length recombinant protein with GST tag. MW of the GST tag alone is 26 KDa.
Dilution	WB~~1:500~1000 E~~N/A
Format	Clear, colorless solution in phosphate buffered saline, pH 7.2 .
Storage	Store at -20°C or lower. Aliquot to avoid repeated freezing and thawing.
Precautions	PCTP Antibody (monoclonal) (M01) is for research use only and not for use in diagnostic or therapeutic procedures.

References

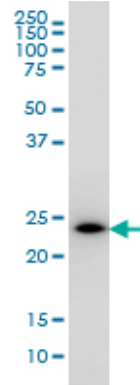
Gene-centric association signals for lipids and apolipoproteins identified via the HumanCVD BeadChip. Talmud PJ, et al. Am J Hum Genet, 2009 Nov. PMID 19913121. Genetic susceptibility to distinct bladder cancer subphenotypes. Guey LT, et al. Eur Urol, 2010 Feb. PMID 19692168. PTEN identified as important risk factor of chronic obstructive pulmonary disease. Hosgood HD 3rd, et al. Respir Med, 2009 Dec. PMID 19625176. Polymorphisms in innate immunity genes and lung cancer risk in Xuanwei, China. Shen M, et al. Environ Mol Mutagen, 2009 May. PMID 19170196. Pathway-based evaluation of 380 candidate genes and lung cancer susceptibility suggests the importance of the cell cycle pathway. Hosgood HD 3rd, et al. Carcinogenesis, 2008 Oct. PMID 18676680.

Images

Blot detection against Immunogen (49.28 KDa) .

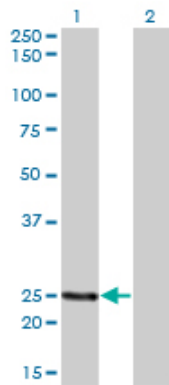


PCTP monoclonal antibody (M01), clone 1F9 Western Blot analysis of PCTP expression in K-562 ((Cat # AT3241a)

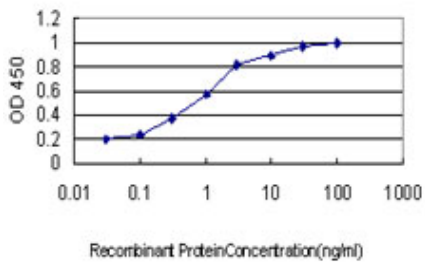


Western Blot analysis of PCTP expression in transfected 293T cell line by PCTP monoclonal antibody (M01), clone 1F9.

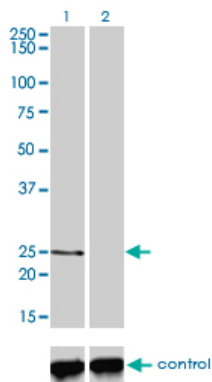
Lane 1: PCTP transfected lysate(24.8 KDa).
Lane 2: Non-transfected lysate.



Detection limit for recombinant GST tagged PCTP is approximately 0.03ng/ml as a capture antibody.



Western blot analysis of PCTP over-expressed 293 cell line, cotransfected with PCTP Validated Chimera RNAi ((Cat # AT3241a)



Please note: All products are 'FOR RESEARCH USE ONLY. NOT FOR USE IN DIAGNOSTIC OR THERAPEUTIC PROCEDURES'.