

# PDE3B Antibody (monoclonal) (M01)

Mouse monoclonal antibody raised against a partial recombinant PDE3B.

Catalog # AT3255a

## Product Information

---

<b>Application</b>	WB, E
<b>Primary Accession</b>	<a href="#">Q13370</a>
<b>Other Accession</b>	<a href="#">NM_000922</a>
<b>Reactivity</b>	Human
<b>Host</b>	mouse
<b>Clonality</b>	monoclonal
<b>Isotype</b>	IgG2a Kappa
<b>Clone Names</b>	4A4
<b>Calculated MW</b>	124333

## Additional Information

---

<b>Gene ID</b>	5140
<b>Other Names</b>	cGMP-inhibited 3', 5'-cyclic phosphodiesterase B, CGIPDE1, CGIP1, Cyclic GMP-inhibited phosphodiesterase B, CGI-PDE B, PDE3B
<b>Target/Specificity</b>	PDE3B (NP_000913, 401 a.a. ~ 500 a.a) partial recombinant protein with GST tag. MW of the GST tag alone is 26 KDa.
<b>Dilution</b>	WB~~1:500~1000 E~~N/A
<b>Format</b>	Clear, colorless solution in phosphate buffered saline, pH 7.2 .
<b>Storage</b>	Store at -20°C or lower. Aliquot to avoid repeated freezing and thawing.
<b>Precautions</b>	PDE3B Antibody (monoclonal) (M01) is for research use only and not for use in diagnostic or therapeutic procedures.

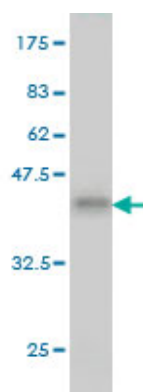
## References

---

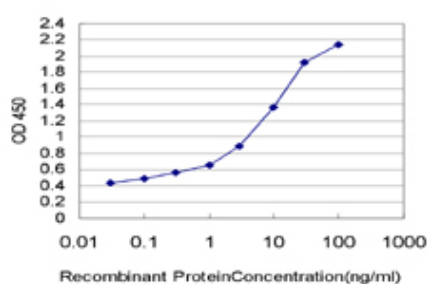
Variation at the NFATC2 Locus Increases the Risk of Thiazolinedinedione-Induced Edema in the Diabetes REduction Assessment with ramipril and rosiglitazone Medication (DREAM) Study. Bailey SD, et al. Diabetes Care, 2010 Jul 13. PMID 20628086. Gene-centric association signals for lipids and apolipoproteins identified via the HumanCVD BeadChip. Talmud PJ, et al. Am J Hum Genet, 2009 Nov. PMID 19913121. Identification of cisplatin-resistance related genes in head and neck squamous cell carcinoma. Yamano Y, et al. Int J Cancer, 2010 Jan 15. PMID 19569180. Phosphodiesterase 3 is present in rabbit and human erythrocytes and its inhibition potentiates iloprost-induced increases in cAMP. Hanson MS, et al. Am J Physiol Heart Circ Physiol, 2008 Aug. PMID 18586889. Numerous distinct PKA-, or EPAC-based, signalling complexes allow selective phosphodiesterase 3 and phosphodiesterase 4 coordination of cell adhesion. Raymond DR, et al. Cell Signal,

## Images

---



Antibody Reactive Against Recombinant Protein. Western Blot detection against Immunogen (36.74 KDa) .



Detection limit for recombinant GST tagged PDE3B is approximately 0.03ng/ml as a capture antibody.

Please note: All products are 'FOR RESEARCH USE ONLY. NOT FOR USE IN DIAGNOSTIC OR THERAPEUTIC PROCEDURES'.