

## PDE6D Antibody (monoclonal) (M06)

Mouse monoclonal antibody raised against a full length recombinant PDE6D.

Catalog # AT3258a

### Product Information

---

<b>Application</b>	WB, IF, E
<b>Primary Accession</b>	<a href="#">O43924</a>
<b>Other Accession</b>	<a href="#">BC007831</a>
<b>Reactivity</b>	Human
<b>Host</b>	mouse
<b>Clonality</b>	monoclonal
<b>Isotype</b>	IgG2b Kappa
<b>Clone Names</b>	5C7
<b>Calculated MW</b>	17420

### Additional Information

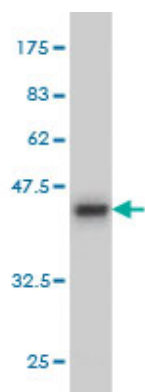
---

<b>Gene ID</b>	5147
<b>Other Names</b>	Retinal rod rhodopsin-sensitive cGMP 3', 5'-cyclic phosphodiesterase subunit delta, GMP-PDE delta, Protein p17, PDE6D, PDED
<b>Target/Specificity</b>	PDE6D (AAH07831, 1 a.a. ~ 150 a.a) full-length recombinant protein with GST tag. MW of the GST tag alone is 26 KDa.
<b>Dilution</b>	WB~~1:500~1000 IF~~1:50~200 E~~N/A
<b>Format</b>	Clear, colorless solution in phosphate buffered saline, pH 7.2 .
<b>Storage</b>	Store at -20°C or lower. Aliquot to avoid repeated freezing and thawing.
<b>Precautions</b>	PDE6D Antibody (monoclonal) (M06) is for research use only and not for use in diagnostic or therapeutic procedures.

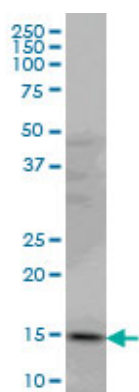
### References

---

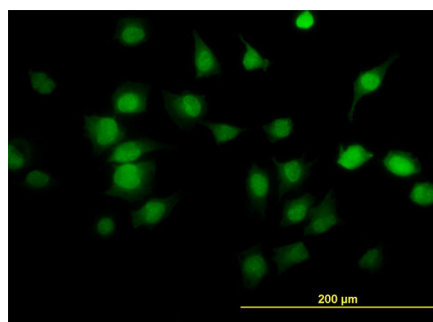
Many sequence variants affecting diversity of adult human height. Gudbjartsson DF, et al. Nat Genet, 2008 May. PMID 18391951. Internalization and recycling of the human prostacyclin receptor is modulated through its isoprenylation-dependent interaction with the delta subunit of cGMP phosphodiesterase 6. Wilson SJ, et al. J Biol Chem, 2006 Apr 28. PMID 16527812. Assay and functional properties of PrBP(PDEdelta), a prenyl-binding protein interacting with multiple partners. Zhang H, et al. Methods Enzymol, 2005. PMID 16473576. Towards a proteome-scale map of the human protein-protein interaction network. Rual JF, et al. Nature, 2005 Oct 20. PMID 16189514. A human protein-protein interaction network: a resource for annotating the proteome. Stelzl U, et al. Cell, 2005 Sep 23. PMID 16169070.



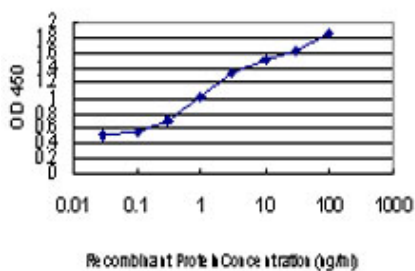
Antibody Reactive Against Recombinant Protein. Western Blot detection against Immunogen (42.24 KDa) .



PDE6D monoclonal antibody (M06), clone 5C7 Western Blot analysis of PDE6D expression in HeLa (Cat # AT3258a )



Immunofluorescence of monoclonal antibody to PDE6D on HeLa cell. [antibody concentration 20 ug/ml]



Detection limit for recombinant GST tagged PDE6D is approximately 0.03ng/ml as a capture antibody.

Please note: All products are 'FOR RESEARCH USE ONLY. NOT FOR USE IN DIAGNOSTIC OR THERAPEUTIC PROCEDURES'.