

PECAM1 Antibody (monoclonal) (M01)

Mouse monoclonal antibody raised against a full length recombinant PECAM1.

Catalog # AT3267a

Product Information

Application	WB, IHC, IP
Primary Accession	P16284
Other Accession	BC022512
Reactivity	Human
Host	Mouse
Clonality	monoclonal
Isotype	IgG1 kappa
Clone Names	S5
Calculated MW	82522

Additional Information

Gene ID	5175
Other Names	Platelet endothelial cell adhesion molecule, PECAM-1, EndoCAM, GPIIA', PECA1, CD31, PECAM1
Target/Specificity	PECAM1 (AAH22512, 29 a.a. ~ 738 a.a) full-length recombinant protein with GST tag. MW of the GST tag alone is 26 KDa.
Dilution	WB~~1:500~1000 IHC~~1:100~500 IP~~N/A
Format	Clear, colorless solution in phosphate buffered saline, pH 7.2 .
Storage	Store at -20°C or lower. Aliquot to avoid repeated freezing and thawing.
Precautions	PECAM1 Antibody (monoclonal) (M01) is for research use only and not for use in diagnostic or therapeutic procedures.

Background

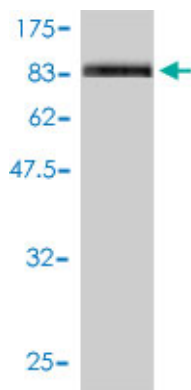
The protein encoded by this gene is found on the surface of platelets, monocytes, neutrophils, and some types of T-cells, and makes up a large portion of endothelial cell intercellular junctions. The encoded protein is a member of the immunoglobulin superfamily and is likely involved in leukocyte migration, angiogenesis, and integrin activation.

References

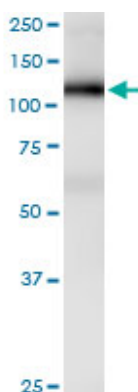
A genetic association study of maternal and fetal candidate genes that predispose to preterm prelabor rupture of membranes (PROM). Romero R, et al. Am J Obstet Gynecol, 2010 Jul 29. PMID

20673868.Physiogenomic analysis of statin-treated patients: domain-specific counter effects within the ACACB gene on low-density lipoprotein cholesterol? Rua?o G, et al. Pharmacogenomics, 2010 Jul. PMID 20602615.Phosphorylation of leukocyte PECAM and its association with detergent-resistant membranes regulate transendothelial migration. Florey O, et al. J Immunol, 2010 Aug 1. PMID 20581150.Interleukin-9 polymorphism in infants with respiratory syncytial virus infection: an opposite effect in boys and girls. Schuurhof A, et al. Pediatr Pulmonol, 2010 Jun. PMID 20503287.Common polymorphisms in ITGA2, PON1 and THBS2 are associated with coronary atherosclerosis in a candidate gene association study of the Chinese Han population. Wang Y, et al. J Hum Genet, 2010 Aug. PMID 20485444.

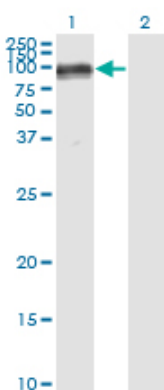
Images



Antibody Reactive Against Recombinant Protein.Western Blot detection against Immunogen (103.95 KDa) .

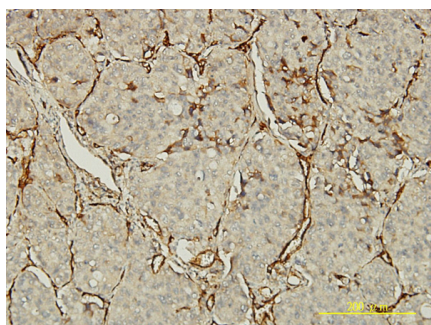


PECAM1 monoclonal antibody (M01), clone 1D2-1A5. Western Blot analysis of PECAM1 expression in human placenta.

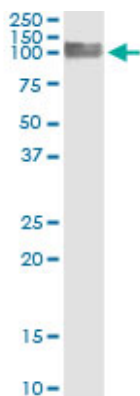


Western Blot analysis of PECAM1 expression in transfected 293T cell line by PECAM1 monoclonal antibody (M01), clone 1D2-1A5.

Lane 1: PECAM1 transfected lysate(82.4 KDa).
Lane 2: Non-transfected lysate.



Immunoperoxidase of monoclonal antibody to PECAM1 on formalin-fixed paraffin-embedded human lung, adenocarcinoma tissue. [antibody concentration 5 ug/ml]



Immunoprecipitation of PECAM1 transfected lysate using anti-PECAM1 monoclonal antibody and Protein A Magnetic Bead ([U0007](#)), and immunoblotted with PECAM1 MaxPab rabbit polyclonal antibody.

Please note: All products are 'FOR RESEARCH USE ONLY. NOT FOR USE IN DIAGNOSTIC OR THERAPEUTIC PROCEDURES'.