

## PER2 Antibody (monoclonal) (M01)

Mouse monoclonal antibody raised against a partial recombinant PER2.

Catalog # AT3269a

### Product Information

---

<b>Application</b>	WB, IHC, IF, E
<b>Primary Accession</b>	<a href="#">O15055</a>
<b>Other Accession</b>	<a href="#">NM_022817</a>
<b>Reactivity</b>	Human
<b>Host</b>	Mouse
<b>Clonality</b>	monoclonal
<b>Isotype</b>	IgG2b Kappa
<b>Clone Names</b>	5C10
<b>Calculated MW</b>	136579

### Additional Information

---

<b>Gene ID</b>	8864
<b>Other Names</b>	Period circadian protein homolog 2, hPER2, Circadian clock protein PERIOD 2, PER2, KIAA0347
<b>Target/Specificity</b>	PER2 (NP_073728, 1 a.a. ~ 100 a.a) partial recombinant protein with GST tag. MW of the GST tag alone is 26 KDa.
<b>Dilution</b>	WB~~1:500~1000 IHC~~1:100~500 IF~~1:50~200 E~~N/A
<b>Format</b>	Clear, colorless solution in phosphate buffered saline, pH 7.2 .
<b>Storage</b>	Store at -20°C or lower. Aliquot to avoid repeated freezing and thawing.
<b>Precautions</b>	PER2 Antibody (monoclonal) (M01) is for research use only and not for use in diagnostic or therapeutic procedures.

### Background

---

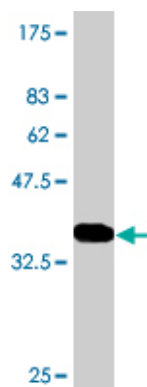
This gene is a member of the Period family of genes and is expressed in a circadian pattern in the suprachiasmatic nucleus, the primary circadian pacemaker in the mammalian brain. Genes in this family encode components of the circadian rhythms of locomotor activity, metabolism, and behavior. Circadian expression in the suprachiasmatic nucleus continues in constant darkness, and a shift in the light/dark cycle evokes a proportional shift of gene expression in the suprachiasmatic nucleus. The specific function of this gene is not yet known.

### References

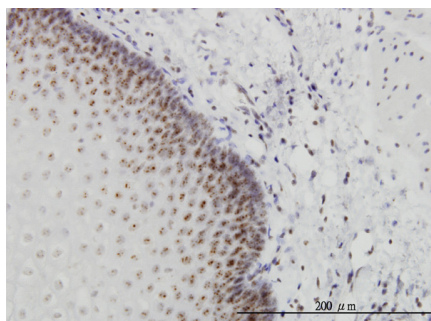
---

1. Prognostic relevance of Period1 (Per1) and Period2 (Per2) expression in human gastric cancer. Zhao H, Zeng ZL, Yang J, Jin Y, Qiu MZ, Hu XY, Han J, Liu KY, Liao JW, Xu RH, Zou QF. Int J Clin Exp Pathol. 2014 Jan 15;7(2):619-30.

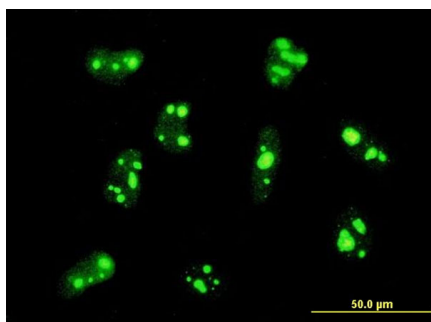
## Images



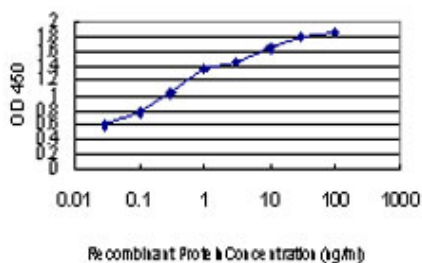
Antibody Reactive Against Recombinant Protein. Western Blot detection against Immunogen (36.74 KDa) .



Immunoperoxidase of monoclonal antibody to PER2 on formalin-fixed paraffin-embedded human esophagus. [antibody concentration 1 ug/ml]



Immunofluorescence of monoclonal antibody to PER2 on HeLa cell . [antibody concentration 10 ug/ml]



Detection limit for recombinant GST tagged PER2 is approximately 0.03ng/ml as a capture antibody.

Please note: All products are 'FOR RESEARCH USE ONLY. NOT FOR USE IN DIAGNOSTIC OR THERAPEUTIC PROCEDURES'.