

PGM1 Antibody (monoclonal) (M01)

Mouse monoclonal antibody raised against a full length recombinant PGM1.

Catalog # AT3282a

Product Information

Application	WB, IF, IP, E
Primary Accession	P36871
Other Accession	BC019920
Reactivity	Human
Host	mouse
Clonality	monoclonal
Isotype	IgG1 kappa
Clone Names	3B8-H4
Calculated MW	61449

Additional Information

Gene ID	5236
Other Names	Phosphoglucomutase-1, PGM 1, Glucose phosphomutase 1, PGM1
Target/Specificity	PGM1 (AAH19920, 1 a.a. ~ 562 a.a) full-length recombinant protein with GST tag. MW of the GST tag alone is 26 KDa.
Dilution	WB~~1:500~1000 IF~~1:50~200 IP~~N/A E~~N/A
Format	Clear, colorless solution in phosphate buffered saline, pH 7.2 .
Storage	Store at -20°C or lower. Aliquot to avoid repeated freezing and thawing.
Precautions	PGM1 Antibody (monoclonal) (M01) is for research use only and not for use in diagnostic or therapeutic procedures.

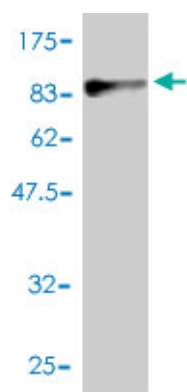
Background

The protein encoded by this gene is an isozyme of phosphoglucomutase (PGM) and belongs to the phosphohexose mutase family. There are several PGM isozymes, which are encoded by different genes and catalyze the transfer of phosphate between the 1 and 6 positions of glucose. In most cell types, this PGM isozyme is predominant, representing about 90% of total PGM activity. In red cells, PGM2 is a major isozyme. This gene is highly polymorphic. Mutations in this gene cause glycogen storage disease type 14. Alternativley spliced transcript variants encoding different isoforms have been identified in this gene.

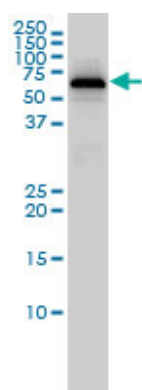
References

1.Functional analysis of beef tenderness.Guillem N, Bonnet M, Jurie C, Picard B.J Proteomics. 2011 Aug 9.

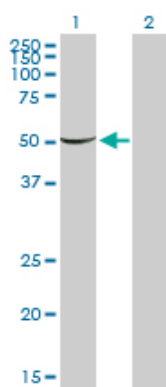
Images



Antibody Reactive Against Recombinant Protein. Western Blot detection against Immunogen (87.56 KDa) .

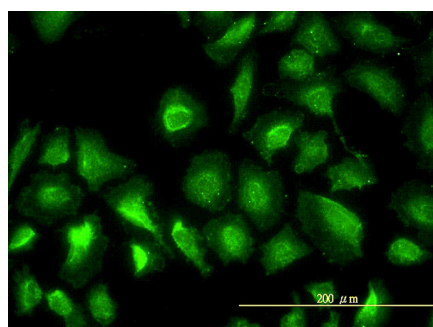


PGM1 monoclonal antibody (M01), clone 3B8-H4 Western Blot analysis of PGM1 expression in Jurkat (Cat # AT3282a)



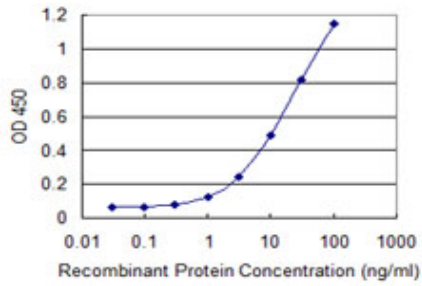
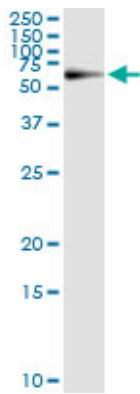
Western Blot analysis of PGM1 expression in transfected 293T cell line by PGM1 monoclonal antibody (M01), clone 3B8-H4.

Lane 1: PGM1 transfected lysate(61.4 KDa).
Lane 2: Non-transfected lysate.

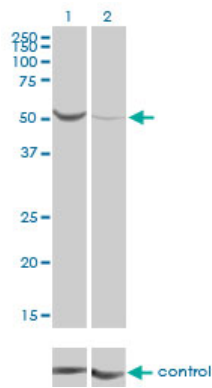


Immunofluorescence of monoclonal antibody to PGM1 on HeLa cell. [antibody concentration 20 ug/ml]

Immunoprecipitation of PGM1 transfected lysate using anti-PGM1 monoclonal antibody and Protein A Magnetic Bead ([U0007](#)), and immunoblotted with PGM1 MaxPab rabbit polyclonal antibody.



Detection limit for recombinant GST tagged PGM1 is 0.3 ng/ml as a capture antibody.



Western blot analysis of PGM1 over-expressed 293 cell line, cotransfected with PGM1 Validated Chimera RNAi (Cat # AT3282a)

Please note: All products are 'FOR RESEARCH USE ONLY. NOT FOR USE IN DIAGNOSTIC OR THERAPEUTIC PROCEDURES'.