

PHGDH Antibody (monoclonal) (M01)

Mouse monoclonal antibody raised against a full length recombinant PHGDH.

Catalog # AT3299a

Product Information

Application	WB, IHC, IF, IP
Primary Accession	O43175
Other Accession	BC011262
Reactivity	Human
Host	Mouse
Clonality	monoclonal
Isotype	IgG1 kappa
Clone Names	4A3-1D6
Calculated MW	56651

Additional Information

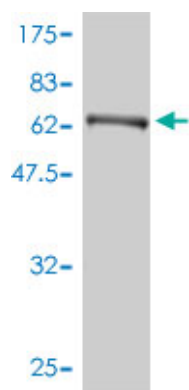
Gene ID	26227
Other Names	D-3-phosphoglycerate dehydrogenase, 3-PGDH, PHGDH, PGDH3
Target/Specificity	PHGDH (AAH11262.1, 1 a.a. ~ 533 a.a) full-length recombinant protein with GST tag. MW of the GST tag alone is 26 KDa.
Dilution	WB~~1:500~1000 IHC~~1:100~500 IF~~1:50~200 IP~~N/A
Format	Clear, colorless solution in phosphate buffered saline, pH 7.2 .
Storage	Store at -20°C or lower. Aliquot to avoid repeated freezing and thawing.
Precautions	PHGDH Antibody (monoclonal) (M01) is for research use only and not for use in diagnostic or therapeutic procedures.

Background

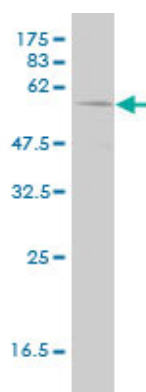
3-Phosphoglycerate dehydrogenase (PHGDH; EC 1.1.1.95) catalyzes the transition of 3-phosphoglycerate into 3-phosphohydroxypyruvate, which is the first and rate-limiting step in the phosphorylated pathway of serine biosynthesis, using NAD⁺/NADH as a cofactor.

References

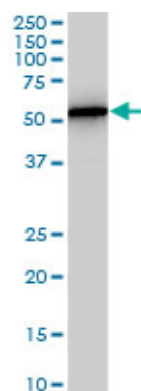
1.Enhanced serine production by bone metastatic breast cancer cells stimulates osteoclastogenesis.Pollari S, Kakonen SM, Edgren H, Wolf M, Kohonen P, Sara H, Guise T, Nees M, Kallioniemi O.Breast Cancer Res Treat. 2010 Mar 30. [Epub ahead of print]



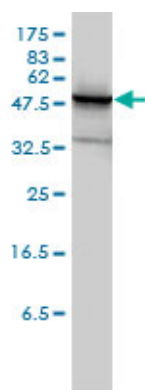
Antibody Reactive Against Recombinant Protein. Western Blot detection against Immunogen (84.37 KDa) .



PHGDH monoclonal antibody (M01), clone 4A3-1D6. Western Blot analysis of PHGDH expression in human liver.



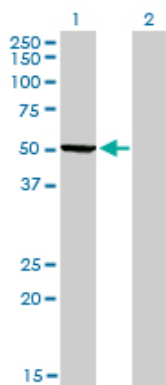
PHGDH monoclonal antibody (M01), clone 4A3-1D6. Western Blot analysis of PHGDH expression in A-431 (Cat # AT3299a)



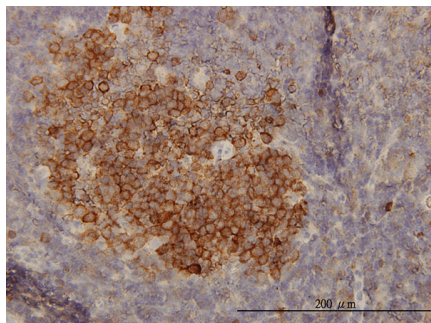
PHGDH monoclonal antibody (M01), clone 4A3-1D6 Western Blot analysis of PHGDH expression in Jurkat (Cat # AT3299a)

Western Blot analysis of PHGDH expression in transfected 293T cell line by PHGDH monoclonal antibody (M01), clone 4A3-1D6.

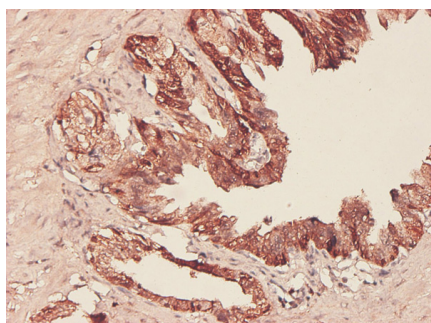
Lane 1: PHGDH transfected lysate(56.7 KDa).



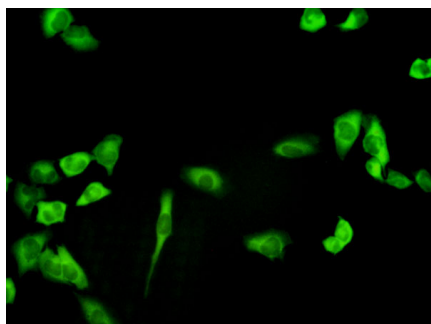
Lane 2: Non-transfected lysate.



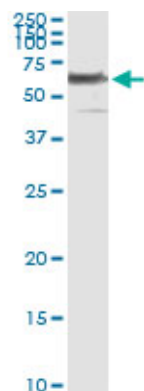
Immunoperoxidase of monoclonal antibody to PHGDH on formalin-fixed paraffin-embedded human lymph node. [antibody concentration 1 ~ 10 ug/ml]



Immunoperoxidase of monoclonal antibody to PHGDH on formalin-fixed paraffin-embedded human prostate. [antibody concentration 3 ug/ml]



Immunofluorescence of monoclonal antibody to PHGDH on HeLa cell. [antibody concentration 1 ~ 10 ug/ml]



Immunoprecipitation of PHGDH transfected lysate using anti-PHGDH monoclonal antibody and Protein A Magnetic Bead ([U0007](#)), and immunoblotted with PHGDH MaxPab rabbit polyclonal antibody.