

PHOSPHO1 Antibody (monoclonal) (M04)

Mouse monoclonal antibody raised against a partial recombinant PHOSPHO1.

Catalog # AT3301a

Product Information

Application	WB, E
Primary Accession	Q8TCT1
Other Accession	NM_178500
Reactivity	Human, Rat
Host	mouse
Clonality	monoclonal
Isotype	IgG1 Kappa
Clone Names	4B2
Calculated MW	29713

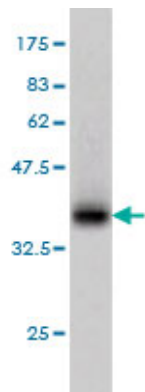
Additional Information

Gene ID	162466
Other Names	Phosphoethanolamine/phosphocholine phosphatase, PHOSPHO1
Target/Specificity	PHOSPHO1 (NP_848595, 168 a.a. ~ 266 a.a) partial recombinant protein with GST tag. MW of the GST tag alone is 26 KDa.
Dilution	WB~~1:500~1000 E~~N/A
Format	Clear, colorless solution in phosphate buffered saline, pH 7.2 .
Storage	Store at -20°C or lower. Aliquot to avoid repeated freezing and thawing.
Precautions	PHOSPHO1 Antibody (monoclonal) (M04) is for research use only and not for use in diagnostic or therapeutic procedures.

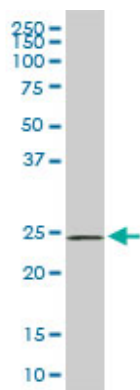
References

High-density association study of 383 candidate genes for volumetric BMD at the femoral neck and lumbar spine among older men. Yerges LM, et al. J Bone Miner Res, 2009 Dec. PMID 19453261. Identification of a novel splice variant of the haloacid dehalogenase: PHOSPHO1. Roberts SJ, et al. Biochem Biophys Res Commun, 2008 Jul 11. PMID 18471996. Probing the substrate specificities of human PHOSPHO1 and PHOSPHO2. Roberts SJ, et al. Biochim Biophys Acta, 2005 Aug 31. PMID 16054448. The status, quality, and expansion of the NIH full-length cDNA project: the Mammalian Gene Collection (MGC). Gerhard DS, et al. Genome Res, 2004 Oct. PMID 15489334. Human PHOSPHO1 exhibits high specific phosphoethanolamine and phosphocholine phosphatase activities. Roberts SJ, et al. Biochem J, 2004 Aug 15. PMID 15175005.

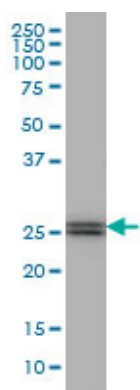
Images



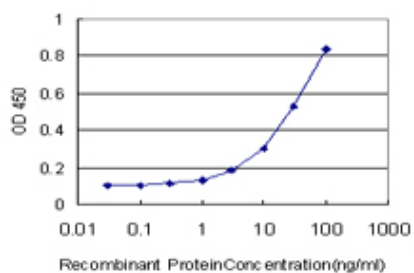
Antibody Reactive Against Recombinant Protein. Western Blot detection against Immunogen (36.63 KDa) .



PHOSPHO1 monoclonal antibody (M04), clone 4B2.
Western Blot analysis of PHOSPHO1 expression in PC-12 (Cat # AT3301a)



PHOSPHO1 monoclonal antibody (M04), clone 4B2
Western Blot analysis of PHOSPHO1 expression in Jurkat (Cat # AT3301a)



Detection limit for recombinant GST tagged PHOSPHO1 is approximately 1 ng/ml as a capture antibody.

Please note: All products are 'FOR RESEARCH USE ONLY. NOT FOR USE IN DIAGNOSTIC OR THERAPEUTIC PROCEDURES'.