

PIPPIN Antibody (monoclonal) (M01)

Mouse monoclonal antibody raised against a full length recombinant PIPPIN.

Catalog # AT3316a

Product Information

Application	WB, IHC, IF, E
Primary Accession	Q9Y534
Other Accession	BC067113
Reactivity	Human
Host	mouse
Clonality	monoclonal
Isotype	IgG1 Kappa
Clone Names	2H8
Calculated MW	16786

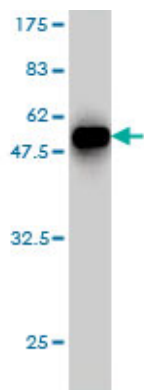
Additional Information

Gene ID	27254
Other Names	Cold shock domain-containing protein C2, RNA-binding protein PIPPIn, CSDC2, PIPPIN
Target/Specificity	PIPPIN (AAH67113, 1 a.a. ~ 153 a.a) full-length recombinant protein with GST tag. MW of the GST tag alone is 26 KDa.
Dilution	WB~~1:500~1000 IHC~~1:100~500 IF~~1:50~200 E~~N/A
Format	Clear, colorless solution in phosphate buffered saline, pH 7.2 .
Storage	Store at -20°C or lower. Aliquot to avoid repeated freezing and thawing.
Precautions	PIPPIN Antibody (monoclonal) (M01) is for research use only and not for use in diagnostic or therapeutic procedures.

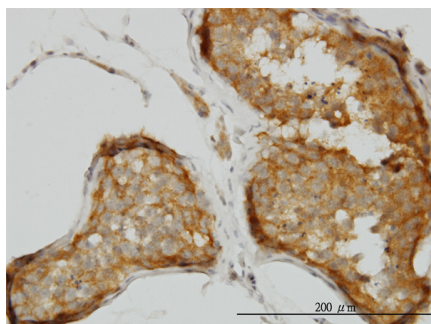
References

Toward a confocal subcellular atlas of the human proteome. Barbe L, et al. Mol Cell Proteomics, 2008 Mar. PMID 18029348. Systematic identification of SH3 domain-mediated human protein-protein interactions by peptide array target screening. Wu C, et al. Proteomics, 2007 Jun. PMID 17474147. Diversification of transcriptional modulation: large-scale identification and characterization of putative alternative promoters of human genes. Kimura K, et al. Genome Res, 2006 Jan. PMID 16344560. The status, quality, and expansion of the NIH full-length cDNA project: the Mammalian Gene Collection (MGC). Gerhard DS, et al. Genome Res, 2004 Oct. PMID 15489334. A genome annotation-driven approach to cloning the human ORFeome. Collins JE, et al. Genome Biol, 2004. PMID 15461802.

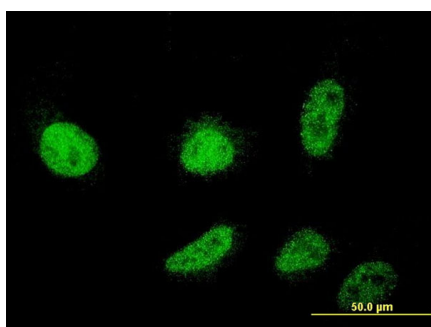
Images



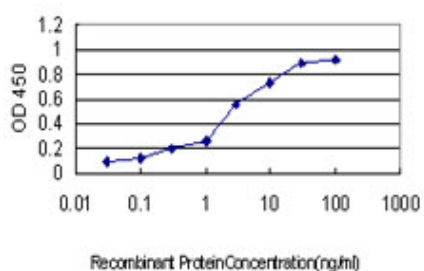
Antibody Reactive Against Recombinant Protein. Western Blot detection against Immunogen (42.57 KDa) .



Immunoperoxidase of monoclonal antibody to CSDC2 on formalin-fixed paraffin-embedded human testis. [antibody concentration 1.5 μ g/ml]



Immunofluorescence of monoclonal antibody to CSDC2 on HeLa cell . [antibody concentration 10 μ g/ml]



Detection limit for recombinant GST tagged CSDC2 is approximately 0.1 ng/ml as a capture antibody.

Please note: All products are 'FOR RESEARCH USE ONLY. NOT FOR USE IN DIAGNOSTIC OR THERAPEUTIC PROCEDURES'.