

PITPNA Antibody (monoclonal) (M01)

Mouse monoclonal antibody raised against a partial recombinant PITPNA.

Catalog # AT3318a

Product Information

Application	WB, E
Primary Accession	Q00169
Other Accession	NM_006224
Reactivity	Human, Mouse, Rat
Host	mouse
Clonality	monoclonal
Isotype	IgG2a Kappa
Clone Names	4G10
Calculated MW	31806

Additional Information

Gene ID	5306
Other Names	Phosphatidylinositol transfer protein alpha isoform, PI-TP-alpha, PtdIns transfer protein alpha, PtdInsTP alpha, PITPNA, PITPN
Target/Specificity	PITPNA (NP_006215.1, 171 a.a. ~ 270 a.a) partial recombinant protein with GST tag. MW of the GST tag alone is 26 KDa.
Dilution	WB~~1:500~1000 E~~N/A
Format	Clear, colorless solution in phosphate buffered saline, pH 7.2 .
Storage	Store at -20°C or lower. Aliquot to avoid repeated freezing and thawing.
Precautions	PITPNA Antibody (monoclonal) (M01) is for research use only and not for use in diagnostic or therapeutic procedures.

Background

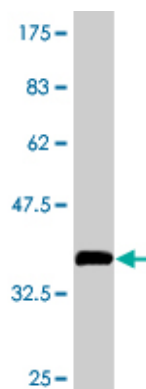
This gene encodes a member of a family of lipid-binding proteins that transfer molecules of phosphatidylinositol or phosphatidylcholine between membrane surfaces. The protein is implicated in phospholipase C signaling and in the production of phosphatidylinositol 3,4,5-trisphosphate (PIP3) by phosphoinositide-3-kinase.

References

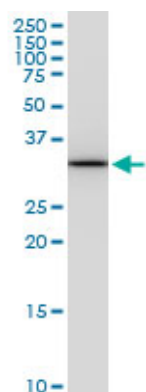
Proteome analysis of the thalamus and cerebrospinal fluid reveals glycolysis dysfunction and potential biomarkers candidates for schizophrenia. Martins-de-Souza D, et al. J Psychiatr Res, 2010 May 14. PMID

20471030.Toward a confocal subcellular atlas of the human proteome. Barbe L, et al. Mol Cell Proteomics, 2008 Mar. PMID 18029348.Violating the splicing rules: TG dinucleotides function as alternative 3' splice sites in U2-dependent introns. Szafranski K, et al. Genome Biol, 2007. PMID 17672918.Large-scale mapping of human protein-protein interactions by mass spectrometry. Ewing RM, et al. Mol Syst Biol, 2007. PMID 17353931.Phosphatidylinositol transfer protein-alpha in netrin-1-induced PLC signalling and neurite outgrowth. Xie Y, et al. Nat Cell Biol, 2005 Nov. PMID 16244667.

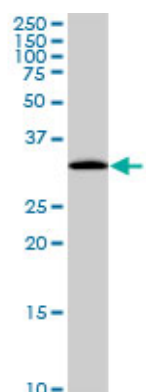
Images



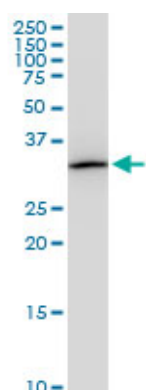
Antibody Reactive Against Recombinant Protein.Western Blot detection against Immunogen (36.74 KDa) .



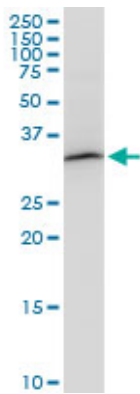
PITPNA monoclonal antibody (M01), clone 4G10. Western Blot analysis of PITPNA expression in PC-12((Cat # AT3318a)



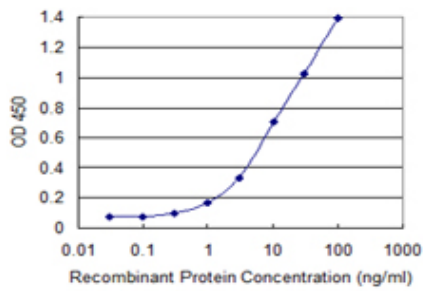
PITPNA monoclonal antibody (M01), clone 4G10. Western Blot analysis of PITPNA expression in HepG2 ((Cat # AT3318a)



PITPNA monoclonal antibody (M01), clone 4G10. Western Blot analysis of PITPNA expression in Raw 264.7((Cat # AT3318a)



PITPNA monoclonal antibody (M01), clone 4G10. Western Blot analysis of PITPNA expression in NIH/3T3((Cat # AT3318a)



Detection limit for recombinant GST tagged PITPNA is 0.1 ng/ml as a capture antibody.

Please note: All products are 'FOR RESEARCH USE ONLY. NOT FOR USE IN DIAGNOSTIC OR THERAPEUTIC PROCEDURES'.