

# PLCD4 Antibody (monoclonal) (M01)

Mouse monoclonal antibody raised against a partial recombinant PLCD4.

Catalog # AT3334a

## Product Information

---

Application	WB, E
Primary Accession	<a href="#">Q9BRC7</a>
Other Accession	<a href="#">BC006355</a>
Reactivity	Human
Host	mouse
Clonality	monoclonal
Isotype	IgG1 Kappa
Clone Names	4D4
Calculated MW	87585

## Additional Information

---

Gene ID	84812
Other Names	1-phosphatidylinositol 4, 5-bisphosphate phosphodiesterase delta-4, hPLCD4, Phosphoinositide phospholipase C-delta-4, Phospholipase C-delta-4, PLC-delta-4, PLCD4
Target/Specificity	PLCD4 (AAH06355, 18 a.a. ~ 127 a.a) partial recombinant protein with GST tag. MW of the GST tag alone is 26 KDa.
Dilution	WB~~1:500~1000 E~~N/A
Format	Clear, colorless solution in phosphate buffered saline, pH 7.2 .
Storage	Store at -20°C or lower. Aliquot to avoid repeated freezing and thawing.
Precautions	PLCD4 Antibody (monoclonal) (M01) is for research use only and not for use in diagnostic or therapeutic procedures.

## Background

---

Phosphatidylinositol-specific phospholipase C (PLC) plays an important role in receptor-mediated signal transduction by generating 2 second messenger molecules, inositol 1,4,5-triphosphate (IP3) and diacylglycerol, from phosphatidylinositol 4,5-bisphosphate (PIP2). PLC comprises a diverse family of enzymes that differ in structure and tissue distribution (Berridge, 1993 [PubMed 8381210]).

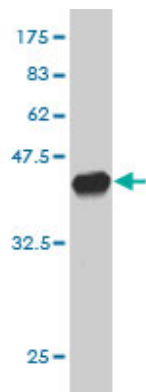
## References

---

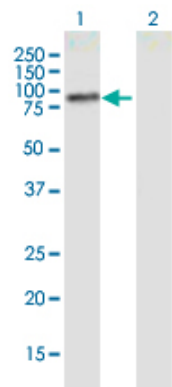
Variation at the NFATC2 Locus Increases the Risk of Thiazolinedinedione-Induced Edema in the Diabetes

REduction Assessment with ramipril and rosiglitazone Medication (DREAM) Study. Bailey SD, et al. Diabetes Care, 2010 Jul 13. PMID 20628086. Polymorphisms in innate immunity genes and patients response to dendritic cell-based HIV immuno-treatment. Segat L, et al. Vaccine, 2010 Mar 2. PMID 20056178. Gene-centric association signals for lipids and apolipoproteins identified via the HumanCVD BeadChip. Talmud PJ, et al. Am J Hum Genet, 2009 Nov. PMID 19913121. Identification of new putative susceptibility genes for several psychiatric disorders by association analysis of regulatory and non-synonymous SNPs of 306 genes involved in neurotransmission and neurodevelopment. Gratac?s M, et al. Am J Med Genet B Neuropsychiatr Genet, 2009 Sep 5. PMID 19086053. Identification and analysis of the promoter region of the human PLC-delta4 gene. Chae SW, et al. Mol Biol Rep, 2007 Jun. PMID 17394098.

Images

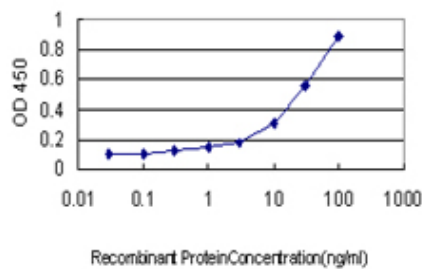


Antibody Reactive Against Recombinant Protein. Western Blot detection against Immunogen (37.84 KDa) .



Western Blot analysis of PLCD4 expression in transfected 293T cell line by PLCD4 monoclonal antibody (M01), clone 4D4.

Lane 1: PLCD4 transfected lysate (Predicted MW: 87.6 KDa).  
Lane 2: Non-transfected lysate.



Detection limit for recombinant GST tagged PLCD4 is approximately 0.3ng/ml as a capture antibody.

Please note: All products are 'FOR RESEARCH USE ONLY. NOT FOR USE IN DIAGNOSTIC OR THERAPEUTIC PROCEDURES'.