

## PLXDC1 Antibody (monoclonal) (M01)

Mouse monoclonal antibody raised against a partial recombinant PLXDC1.

Catalog # AT3352a

### Product Information

---

<b>Application</b>	WB, E
<b>Primary Accession</b>	<a href="#">Q8IUK5</a>
<b>Other Accession</b>	<a href="#">NM_020405</a>
<b>Reactivity</b>	Human
<b>Host</b>	mouse
<b>Clonality</b>	monoclonal
<b>Isotype</b>	IgG2b Kappa
<b>Clone Names</b>	4B10
<b>Calculated MW</b>	55760

### Additional Information

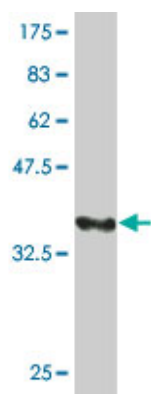
---

<b>Gene ID</b>	57125
<b>Other Names</b>	Plexin domain-containing protein 1, Tumor endothelial marker 3, Tumor endothelial marker 7, PLXDC1, TEM3, TEM7
<b>Target/Specificity</b>	PLXDC1 (NP_065138, 313 a.a. ~ 421 a.a) partial recombinant protein with GST tag. MW of the GST tag alone is 26 KDa.
<b>Dilution</b>	WB~~1:500~1000 E~~N/A
<b>Format</b>	Clear, colorless solution in phosphate buffered saline, pH 7.2 .
<b>Storage</b>	Store at -20°C or lower. Aliquot to avoid repeated freezing and thawing.
<b>Precautions</b>	PLXDC1 Antibody (monoclonal) (M01) is for research use only and not for use in diagnostic or therapeutic procedures.

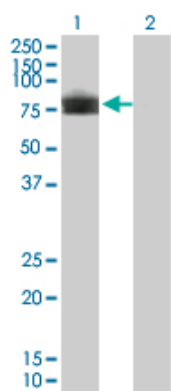
### References

---

Personalized smoking cessation: interactions between nicotine dose, dependence and quit-success genotype score. Rose JE, et al. Mol Med, 2010 Jul-Aug. PMID 20379614. Preferential expression of the secreted and membrane forms of tumor endothelial marker 7 transcripts in osteosarcoma. Halder C, et al. Anticancer Res, 2009 Nov. PMID 20032373. TEM7 (PLXDC1) in neovascular endothelial cells of fibrovascular membranes from patients with proliferative diabetic retinopathy. Yamaji Y, et al. Invest Ophthalmol Vis Sci, 2008 Jul. PMID 18316703. High expression of tumor endothelial marker 7 is associated with metastasis and poor survival of patients with osteogenic sarcoma. Fuchs B, et al. Gene, 2007 Sep 15. PMID 17560052. Identification of the basement membrane protein nidogen as a candidate ligand for tumor endothelial marker 7 in vitro and in vivo. Lee HK, et al. FEBS Lett, 2006 Apr 17. PMID 16574105.

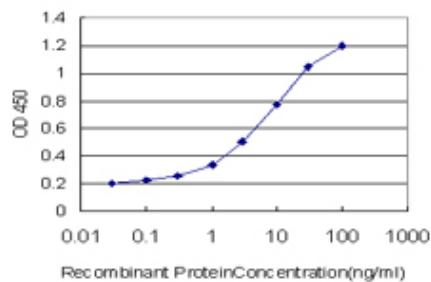


Antibody Reactive Against Recombinant Protein.Western Blot detection against Immunogen (37.73 KDa) .

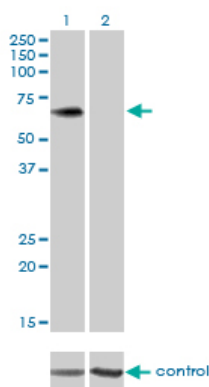


Western Blot analysis of PLXDC1 expression in transfected 293T cell line by PLXDC1 monoclonal antibody (M01), clone 4B10.

Lane 1: PLXDC1 transfected lysate(55.778 KDa).  
Lane 2: Non-transfected lysate.



Detection limit for recombinant GST tagged PLXDC1 is approximately 0.03ng/ml as a capture antibody.



Western blot analysis of PLXDC1 over-expressed 293 cell line, cotransfected with PLXDC1 Validated Chimera RNAi ( Cat # AT3352a )

Please note: All products are 'FOR RESEARCH USE ONLY. NOT FOR USE IN DIAGNOSTIC OR THERAPEUTIC PROCEDURES'.