

PNLIPRP2 Antibody (monoclonal) (M03)

Mouse monoclonal antibody raised against a partial recombinant PNLIPRP2.

Catalog # AT3359a

Product Information

Application	E
Primary Accession	P54317
Other Accession	NM_005396
Reactivity	Human
Host	mouse
Clonality	monoclonal
Isotype	IgG2b Kappa
Clone Names	4F10
Calculated MW	51961

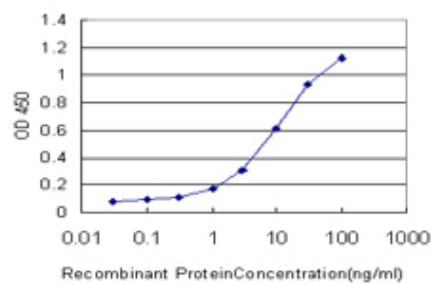
Additional Information

Gene ID	5408
Other Names	Pancreatic lipase-related protein 2, PL-RP2, Galactolipase, PNLIPRP2, PLRP2
Target/Specificity	PNLIPRP2 (NP_005387, 333 a.a. ~ 435 a.a) partial recombinant protein with GST tag. MW of the GST tag alone is 26 KDa.
Dilution	E~~N/A
Format	Clear, colorless solution in phosphate buffered saline, pH 7.2 .
Storage	Store at -20°C or lower. Aliquot to avoid repeated freezing and thawing.
Precautions	PNLIPRP2 Antibody (monoclonal) (M03) is for research use only and not for use in diagnostic or therapeutic procedures.

References

Lipid-dependent cytotoxicity by the lipase PLRP2 and by PLRP2-positive cytotoxic T lymphocytes (CTLs). Alves BN, et al. Cell Biochem Funct, 2009 Jul. PMID 19548271. Structure of human pancreatic lipase-related protein 2 with the lid in an open conformation. Eydoux C, et al. Biochemistry, 2008 Sep 9. PMID 18702514. Further biochemical characterization of human pancreatic lipase-related protein 2 expressed in yeast cells. Eydoux C, et al. J Lipid Res, 2007 Jul. PMID 17401110. Human pancreatic lipase-related protein 2: tissular localization along the digestive tract and quantification in pancreatic juice using a specific ELISA. Eydoux C, et al. Biochim Biophys Acta, 2006 Oct. PMID 16887271. A scan of chromosome 10 identifies a novel locus showing strong association with late-onset Alzheimer disease. Grupe A, et al. Am J Hum Genet, 2006 Jan. PMID 16385451.

Images



Detection limit for recombinant GST tagged PNLIPRP2 is approximately 0.3ng/ml as a capture antibody.

Please note: All products are 'FOR RESEARCH USE ONLY. NOT FOR USE IN DIAGNOSTIC OR THERAPEUTIC PROCEDURES'.