

## PNMA2 Antibody (monoclonal) (M03)

Mouse monoclonal antibody raised against a full length recombinant PNMA2.

Catalog # AT3361a

### Product Information

---

<b>Application</b>	WB, E
<b>Primary Accession</b>	<a href="#">Q9UL42</a>
<b>Other Accession</b>	<a href="#">BC062301</a>
<b>Reactivity</b>	Human
<b>Host</b>	mouse
<b>Clonality</b>	monoclonal
<b>Isotype</b>	IgG2b Kappa
<b>Clone Names</b>	2D4
<b>Calculated MW</b>	41509

### Additional Information

---

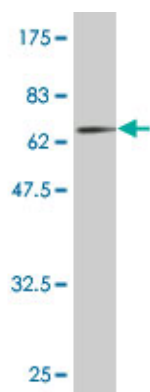
<b>Gene ID</b>	10687
<b>Other Names</b>	Paraneoplastic antigen Ma2, 40 kDa neuronal protein, Onconeural antigen Ma2, Paraneoplastic neuronal antigen MM2, PNMA2, KIAA0883, MA2
<b>Target/Specificity</b>	PNMA2 (AAH62301, 1 a.a. ~ 364 a.a) full-length recombinant protein with GST tag. MW of the GST tag alone is 26 KDa.
<b>Dilution</b>	WB~~1:500~1000 E~~N/A
<b>Format</b>	Clear, colorless solution in phosphate buffered saline, pH 7.2 .
<b>Storage</b>	Store at -20°C or lower. Aliquot to avoid repeated freezing and thawing.
<b>Precautions</b>	PNMA2 Antibody (monoclonal) (M03) is for research use only and not for use in diagnostic or therapeutic procedures.

### References

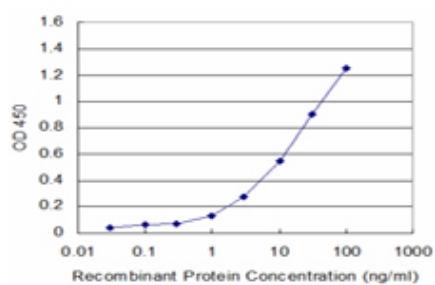
---

Mammalian BTBD12/SLX4 assembles a Holliday junction resolvase and is required for DNA repair. Svendsen JM, et al. Cell, 2009 Jul 10. PMID 19596235. Systematic identification of SH3 domain-mediated human protein-protein interactions by peptide array target screening. Wu C, et al. Proteomics, 2007 Jun. PMID 17474147. Large-scale mapping of human protein-protein interactions by mass spectrometry. Ewing RM, et al. Mol Syst Biol, 2007. PMID 17353931. Diversification of transcriptional modulation: large-scale identification and characterization of putative alternative promoters of human genes. Kimura K, et al. Genome Res, 2006 Jan. PMID 16344560. The status, quality, and expansion of the NIH full-length cDNA project: the Mammalian Gene Collection (MGC). Gerhard DS, et al. Genome Res, 2004 Oct. PMID 15489334.

## Images



Antibody Reactive Against Recombinant Protein. Western Blot detection against Immunogen (65.78 KDa) .



Detection limit for recombinant GST tagged PNMA2 is approximately 1ng/ml as a capture antibody.

Please note: All products are 'FOR RESEARCH USE ONLY. NOT FOR USE IN DIAGNOSTIC OR THERAPEUTIC PROCEDURES'.