

# POLA Antibody (monoclonal) (M01)

Mouse monoclonal antibody raised against a partial recombinant POLA.

Catalog # AT3365a

## Product Information

---

<b>Application</b>	WB, E
<b>Primary Accession</b>	<a href="#">P09884</a>
<b>Other Accession</b>	<a href="#">NM_016937</a>
<b>Reactivity</b>	Human
<b>Host</b>	mouse
<b>Clonality</b>	monoclonal
<b>Isotype</b>	IgG2a Kappa
<b>Clone Names</b>	3C11
<b>Calculated MW</b>	165913

## Additional Information

---

<b>Gene ID</b>	5422
<b>Other Names</b>	DNA polymerase alpha catalytic subunit, DNA polymerase alpha catalytic subunit p180, POLA1, POLA
<b>Target/Specificity</b>	POLA (NP_058633, 1363 a.a. ~ 1462 a.a) partial recombinant protein with GST tag. MW of the GST tag alone is 26 KDa.
<b>Dilution</b>	WB~~1:500~1000 E~~N/A
<b>Format</b>	Clear, colorless solution in phosphate buffered saline, pH 7.2 .
<b>Storage</b>	Store at -20°C or lower. Aliquot to avoid repeated freezing and thawing.
<b>Precautions</b>	POLA Antibody (monoclonal) (M01) is for research use only and not for use in diagnostic or therapeutic procedures.

## Background

---

This gene encodes the catalytic subunit of DNA polymerase, which together with a regulatory and two primase subunits, forms the DNA polymerase alpha complex. The catalytic subunit plays an essential role in the initiation of DNA replication.

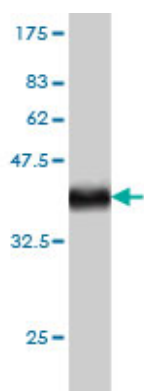
## References

---

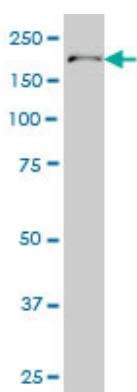
Defining the human deubiquitinating enzyme interaction landscape. Sowa ME, et al. Cell, 2009 Jul 23. PMID 19615732. Physical interactions between Mcm10, DNA, and DNA polymerase alpha. Warren EM, et al. J Biol Chem, 2009 Sep 4. PMID 19608746. Replication stress activates DNA polymerase alpha-associated Chk1.

Taricani L, et al. Cell Cycle, 2009 Feb 1. PMID 19177015. Toward a confocal subcellular atlas of the human proteome. Barbe L, et al. Mol Cell Proteomics, 2008 Mar. PMID 18029348. Mcm10 and And-1/CTF4 recruit DNA polymerase alpha to chromatin for initiation of DNA replication. Zhu W, et al. Genes Dev, 2007 Sep 15. PMID 17761813.

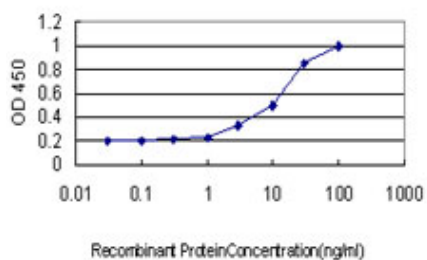
## Images



Antibody Reactive Against Recombinant Protein. Western Blot detection against Immunogen (36.74 KDa) .



POLA monoclonal antibody (M01), clone 3C11 Western Blot analysis of POLA expression in HeLa S3 NE (Cat # AT3365a)



Detection limit for recombinant GST tagged POLA is approximately 0.3ng/ml as a capture antibody.

Please note: All products are 'FOR RESEARCH USE ONLY. NOT FOR USE IN DIAGNOSTIC OR THERAPEUTIC PROCEDURES'.