

POLA2 Antibody (monoclonal) (M01)

Mouse monoclonal antibody raised against a full length recombinant POLA2.

Catalog # AT3366a

Product Information

Application	WB, IF, E
Primary Accession	Q14181
Other Accession	BC001347
Reactivity	Human
Host	mouse
Clonality	monoclonal
Isotype	IgG1 kappa
Clone Names	2F11
Calculated MW	65948

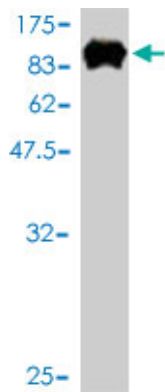
Additional Information

Gene ID	23649
Other Names	DNA polymerase alpha subunit B, DNA polymerase alpha 70 kDa subunit, POLA2
Target/Specificity	POLA2 (AAH01347, 1 a.a. ~ 598 a.a) full-length recombinant protein with GST tag. MW of the GST tag alone is 26 KDa.
Dilution	WB~~1:500~1000 IF~~1:50~200 E~~N/A
Format	Clear, colorless solution in phosphate buffered saline, pH 7.2 .
Storage	Store at -20°C or lower. Aliquot to avoid repeated freezing and thawing.
Precautions	POLA2 Antibody (monoclonal) (M01) is for research use only and not for use in diagnostic or therapeutic procedures.

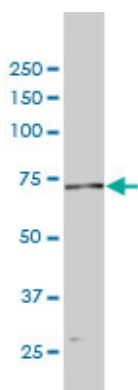
References

Defining the human deubiquitinating enzyme interaction landscape. Sowa ME, et al. Cell, 2009 Jul 23. PMID 19615732. Genetic polymorphisms in 85 DNA repair genes and bladder cancer risk. Michiels S, et al. Carcinogenesis, 2009 May. PMID 19237606. A probability-based approach for high-throughput protein phosphorylation analysis and site localization. Beausoleil SA, et al. Nat Biotechnol, 2006 Oct. PMID 16964243. A human protein-protein interaction network: a resource for annotating the proteome. Stelzl U, et al. Cell, 2005 Sep 23. PMID 16169070. The status, quality, and expansion of the NIH full-length cDNA project: the Mammalian Gene Collection (MGC). Gerhard DS, et al. Genome Res, 2004 Oct. PMID 15489334.

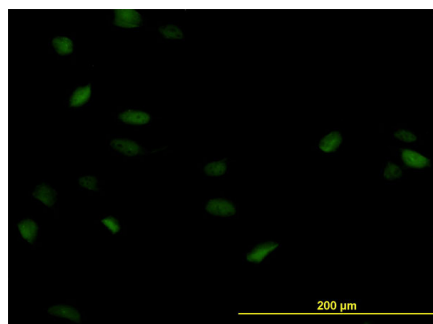
Images



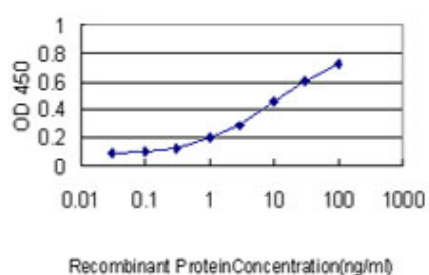
Antibody Reactive Against Recombinant Protein. Western Blot detection against Immunogen (91.52 KDa) .



POLA2 monoclonal antibody (M01), clone 2F11 Western Blot analysis of POLA2 expression in HeLa (Cat # AT3366a)



Immunofluorescence of monoclonal antibody to POLA2 on HeLa cell. [antibody concentration 10 ug/ml]



Detection limit for recombinant GST tagged POLA2 is approximately 0.1 ng/ml as a capture antibody.

Please note: All products are 'FOR RESEARCH USE ONLY. NOT FOR USE IN DIAGNOSTIC OR THERAPEUTIC PROCEDURES'.