

POLR1C Antibody (monoclonal) (M01)

Mouse monoclonal antibody raised against a full length recombinant POLR1C.

Catalog # AT3372a

Product Information

Application	WB, IHC, IF
Primary Accession	O15160
Other Accession	BC008863
Reactivity	Human
Host	mouse
Clonality	monoclonal
Isotype	IgG1 kappa
Clone Names	3A5-H2
Calculated MW	39250

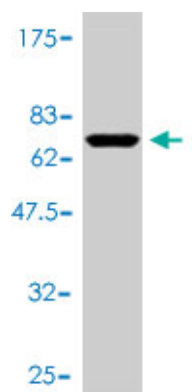
Additional Information

Gene ID	9533
Other Names	DNA-directed RNA polymerases I and III subunit RPAC1, DNA-directed RNA polymerase I subunit C, RNA polymerases I and III subunit AC1, AC40, DNA-directed RNA polymerases I and III 40 kDa polypeptide, RPA40, RPA39, RPC40, POLR1C, POLR1E
Target/Specificity	POLR1C (AAH08863, 1 a.a. ~ 346 a.a) full-length recombinant protein with GST tag. MW of the GST tag alone is 26 KDa.
Dilution	WB~~1:500~1000 IHC~~1:100~500 IF~~1:50~200
Format	Clear, colorless solution in phosphate buffered saline, pH 7.2 .
Storage	Store at -20°C or lower. Aliquot to avoid repeated freezing and thawing.
Precautions	POLR1C Antibody (monoclonal) (M01) is for research use only and not for use in diagnostic or therapeutic procedures.

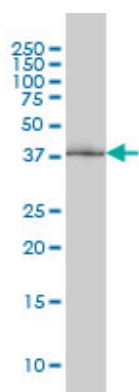
References

Defining the human deubiquitinating enzyme interaction landscape. Sowa ME, et al. Cell, 2009 Jul 23. PMID 19615732. Large-scale mapping of human protein-protein interactions by mass spectrometry. Ewing RM, et al. Mol Syst Biol, 2007. PMID 17353931. Characterization of the interactome of the human MutL homologues MLH1, PMS1, and PMS2. Cannavo E, et al. J Biol Chem, 2007 Feb 2. PMID 17148452. Towards a proteome-scale map of the human protein-protein interaction network. Rual JF, et al. Nature, 2005 Oct 20. PMID 16189514. Nucleolar proteome dynamics. Andersen JS, et al. Nature, 2005 Jan 6. PMID 15635413.

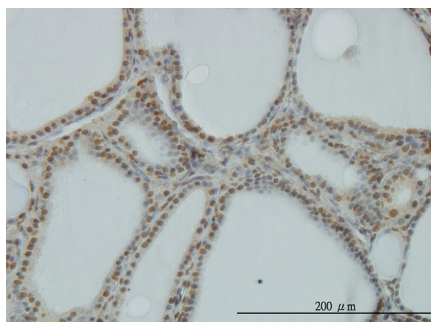
Images



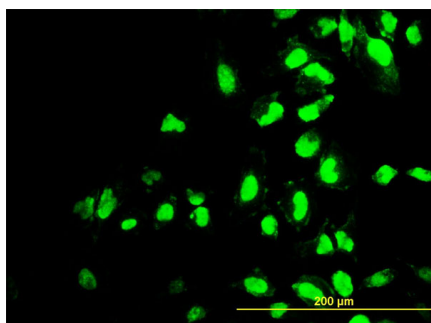
Antibody Reactive Against Recombinant Protein. Western Blot detection against Immunogen (63.8 KDa) .



POLR1C monoclonal antibody (M01), clone 3A5-H2
Western Blot analysis of POLR1C expression in K-562 (Cat # AT3372a)



Immunoperoxidase of monoclonal antibody to POLR1C on formalin-fixed paraffin-embedded human thyroid nodular goiter. [antibody concentration 3 ug/ml]



Immunofluorescence of monoclonal antibody to POLR1C on HeLa cell. [antibody concentration 7 ug/ml]

Please note: All products are 'FOR RESEARCH USE ONLY. NOT FOR USE IN DIAGNOSTIC OR THERAPEUTIC PROCEDURES'.