

## POLR1C Antibody (monoclonal) (M05)

Mouse monoclonal antibody raised against a full length recombinant POLR1C.

Catalog # AT3373a

### Product Information

---

<b>Application</b>	WB, IHC, E
<b>Primary Accession</b>	<a href="#">O15160</a>
<b>Other Accession</b>	<a href="#">BC008863</a>
<b>Reactivity</b>	Human
<b>Host</b>	mouse
<b>Clonality</b>	monoclonal
<b>Isotype</b>	IgG1 Kappa
<b>Clone Names</b>	M1
<b>Calculated MW</b>	39250

### Additional Information

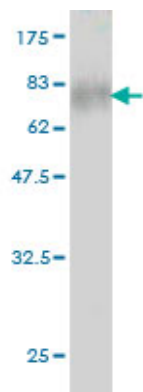
---

<b>Gene ID</b>	9533
<b>Other Names</b>	DNA-directed RNA polymerases I and III subunit RPAC1, DNA-directed RNA polymerase I subunit C, RNA polymerases I and III subunit AC1, AC40, DNA-directed RNA polymerases I and III 40 kDa polypeptide, RPA40, RPA39, RPC40, POLR1C, POLR1E
<b>Target/Specificity</b>	POLR1C (AAH08863, 1 a.a. ~ 346 a.a) full-length recombinant protein with GST tag. MW of the GST tag alone is 26 KDa.
<b>Dilution</b>	WB~~1:500~1000 IHC~~1:100~500 E~~N/A
<b>Format</b>	Clear, colorless solution in phosphate buffered saline, pH 7.2 .
<b>Storage</b>	Store at -20°C or lower. Aliquot to avoid repeated freezing and thawing.
<b>Precautions</b>	POLR1C Antibody (monoclonal) (M05) is for research use only and not for use in diagnostic or therapeutic procedures.

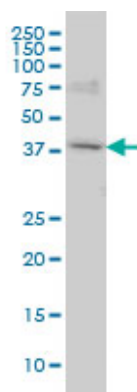
### References

---

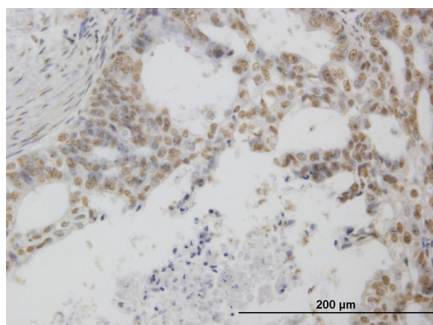
Defining the human deubiquitinating enzyme interaction landscape. Sowa ME, et al. Cell, 2009 Jul 23. PMID 19615732. Large-scale mapping of human protein-protein interactions by mass spectrometry. Ewing RM, et al. Mol Syst Biol, 2007. PMID 17353931. Characterization of the interactome of the human MutL homologues MLH1, PMS1, and PMS2. Cannavo E, et al. J Biol Chem, 2007 Feb 2. PMID 17148452. Towards a proteome-scale map of the human protein-protein interaction network. Rual JF, et al. Nature, 2005 Oct 20. PMID 16189514. Nucleolar proteome dynamics. Andersen JS, et al. Nature, 2005 Jan 6. PMID 15635413.



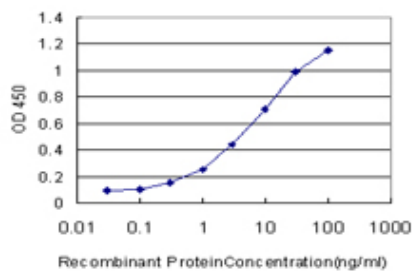
Antibody Reactive Against Recombinant Protein.Western Blot detection against Immunogen (63.8 KDa) .



POLR1C monoclonal antibody (M05), clone M1 Western Blot analysis of POLR1C expression in HeLa ( (Cat # AT3373a )



Immunoperoxidase of monoclonal antibody to POLR1C on formalin-fixed paraffin-embedded human pancreatic cancer. [antibody concentration 0.6 ug/ml]



Detection limit for recombinant GST tagged POLR1C is approximately 0.3ng/ml as a capture antibody.

Please note: All products are 'FOR RESEARCH USE ONLY. NOT FOR USE IN DIAGNOSTIC OR THERAPEUTIC PROCEDURES'.