

# POLR2H Antibody (monoclonal) (M01)

Mouse monoclonal antibody raised against a full length recombinant POLR2H.  
Catalog # AT3376a

## Product Information

---

<b>Application</b>	WB, E
<b>Primary Accession</b>	<a href="#">P52434</a>
<b>Other Accession</b>	<a href="#">BC000739</a>
<b>Reactivity</b>	Human
<b>Host</b>	mouse
<b>Clonality</b>	monoclonal
<b>Isotype</b>	IgG1 Kappa
<b>Clone Names</b>	3G6-1A4

## Additional Information

---

<b>Other Names</b>	DNA-directed RNA polymerases I, II, and III subunit RPABC3, RNA polymerases I, II, and III subunit ABC3, DNA-directed RNA polymerase II subunit H, DNA-directed RNA polymerases I, II, and III 171 kDa polypeptide, RPB17, RPB8 homolog, hRPB8, POLR2H
<b>Target/Specificity</b>	POLR2H (AAH00739, 1 a.a. ~ 150 a.a) full-length recombinant protein with GST tag. MW of the GST tag alone is 26 KDa.
<b>Dilution</b>	WB~~1:500~1000 E~~N/A
<b>Format</b>	Clear, colorless solution in phosphate buffered saline, pH 7.2 .
<b>Storage</b>	Store at -20°C or lower. Aliquot to avoid repeated freezing and thawing.
<b>Precautions</b>	POLR2H Antibody (monoclonal) (M01) is for research use only and not for use in diagnostic or therapeutic procedures.

## Background

---

This gene encodes one of the essential subunits of RNA polymerase II that is shared by the other two eukaryotic DNA-directed RNA polymerases, I and III.

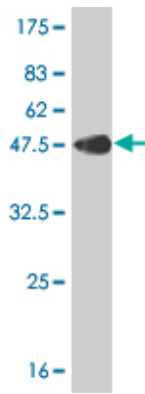
## References

---

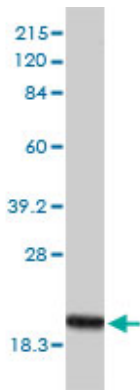
1.Examining the Complexity of Human RNA Polymerase Complexes using HaloTag Technology Coupled to Label Free Quantitative Proteomics.Daniels DL, Mendez J, Mosley AL, Ramisetty SR, Murphy N, Benink H, Wood KV, Urh M, Washburn MP.J Proteome Res. 2012 Jan 3.

## Images

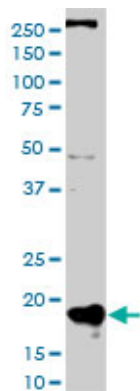
---



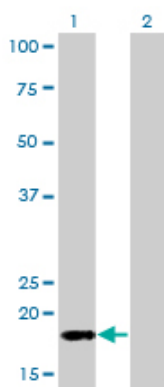
Antibody Reactive Against Recombinant Protein. Western Blot detection against Immunogen (42.24 KDa) .



POLR2H monoclonal antibody (M01), clone 3G6-1A4  
Western Blot analysis of POLR2H expression in HeLa ( (Cat # AT3376a )

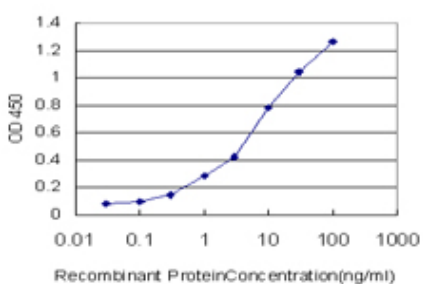


POLR2H monoclonal antibody (M01), clone 3G6-1A4.  
Western Blot analysis of POLR2H expression in HepG2 ( (Cat # AT3376a )



Western Blot analysis of POLR2H expression in transfected 293T cell line by POLR2H monoclonal antibody (M01), clone 3G6-1A4.

Lane 1: POLR2H transfected lysate(17.1 KDa).  
Lane 2: Non-transfected lysate.



Detection limit for recombinant GST tagged POLR2H is approximately 0.3ng/ml as a capture antibody.

Please note: All products are 'FOR RESEARCH USE ONLY. NOT FOR USE IN DIAGNOSTIC OR THERAPEUTIC PROCEDURES'.