

# PPA1 Antibody (monoclonal) (M01)

Mouse monoclonal antibody raised against a partial recombinant PPA1.

Catalog # AT3391a

## Product Information

---

<b>Application</b>	WB, E
<b>Primary Accession</b>	<a href="#">Q15181</a>
<b>Other Accession</b>	<a href="#">NM_021129</a>
<b>Reactivity</b>	Human, Rat
<b>Host</b>	mouse
<b>Clonality</b>	monoclonal
<b>Isotype</b>	IgG1 Kappa
<b>Clone Names</b>	3B2
<b>Calculated MW</b>	32660

## Additional Information

---

<b>Gene ID</b>	5464
<b>Other Names</b>	Inorganic pyrophosphatase, Pyrophosphate phospho-hydrolase, PPase, PPA1, IOPPP, PP
<b>Target/Specificity</b>	PPA1 (NP_066952, 10 a.a. ~ 111 a.a) partial recombinant protein with GST tag. MW of the GST tag alone is 26 KDa.
<b>Dilution</b>	WB~~1:500~1000 E~~N/A
<b>Format</b>	Clear, colorless solution in phosphate buffered saline, pH 7.2 .
<b>Storage</b>	Store at -20°C or lower. Aliquot to avoid repeated freezing and thawing.
<b>Precautions</b>	PPA1 Antibody (monoclonal) (M01) is for research use only and not for use in diagnostic or therapeutic procedures.

## Background

---

The protein encoded by this gene is a member of the inorganic pyrophosphatase (PPase) family. PPases catalyze the hydrolysis of pyrophosphate to inorganic phosphate, which is important for the phosphate metabolism of cells. Studies of a similar protein in bovine suggested a cytoplasmic localization of this enzyme.

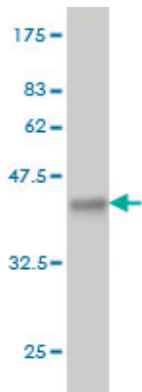
## References

---

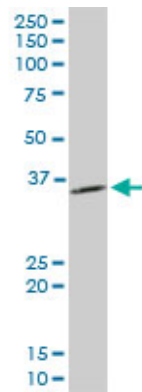
Localization of the structural genes for hexokinase-1 and inorganic pyrophosphatase on region (pter-->q24) of human chromosome 10. Chern CJ. Cytogenet Cell Genet, 1976. PMID 17494625.[Identification of the

proteins interacting with neuroprotective peptide humanin in a yeast two-hybrid system] Maksimov VV, et al. Genetika, 2006 Feb. PMID 16583711. Proteomic analysis of SUMO4 substrates in HEK293 cells under serum starvation-induced stress. Guo D, et al. Biochem Biophys Res Commun, 2005 Dec 2. PMID 16236267. A human protein-protein interaction network: a resource for annotating the proteome. Stelzl U, et al. Cell, 2005 Sep 23. PMID 16169070. Proteomics of human umbilical vein endothelial cells applied to etoposide-induced apoptosis. Bruneel A, et al. Proteomics, 2005 Oct. PMID 16130169.

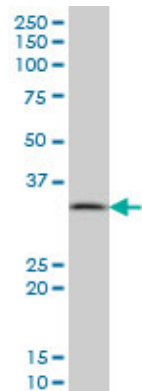
Images



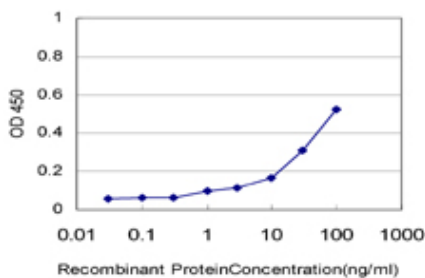
Antibody Reactive Against Recombinant Protein. Western Blot detection against Immunogen (36.96 KDa) .



PPA1 monoclonal antibody (M01), clone 3B2. Western Blot analysis of PPA1 expression in PC-12 ( (Cat # AT3391a )



PPA1 monoclonal antibody (M01), clone 3B2 Western Blot analysis of PPA1 expression in A-431 ( (Cat # AT3391a )



Detection limit for recombinant GST tagged PPA1 is approximately 1ng/ml as a capture antibody.

Please note: All products are 'FOR RESEARCH USE ONLY. NOT FOR USE IN DIAGNOSTIC OR THERAPEUTIC PROCEDURES'.