

PPP1R2 Antibody (monoclonal) (M01)

Mouse monoclonal antibody raised against a partial recombinant PPP1R2.

Catalog # AT3409a

Product Information

Application	WB, IHC, E
Primary Accession	P41236
Other Accession	NM_006241
Reactivity	Human
Host	mouse
Clonality	monoclonal
Isotype	IgG2a Kappa
Clone Names	2E10
Calculated MW	23015

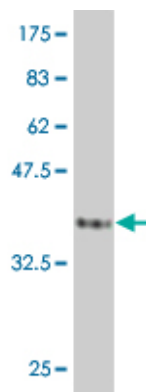
Additional Information

Gene ID	5504
Other Names	Protein phosphatase inhibitor 2, IPP-2, PPP1R2, IPP2
Target/Specificity	PPP1R2 (NP_006232, 1 a.a. ~ 100 a.a) partial recombinant protein with GST tag. MW of the GST tag alone is 26 KDa.
Dilution	WB~~1:500~1000 IHC~~1:100~500 E~~N/A
Format	Clear, colorless solution in phosphate buffered saline, pH 7.2 .
Storage	Store at -20°C or lower. Aliquot to avoid repeated freezing and thawing.
Precautions	PPP1R2 Antibody (monoclonal) (M01) is for research use only and not for use in diagnostic or therapeutic procedures.

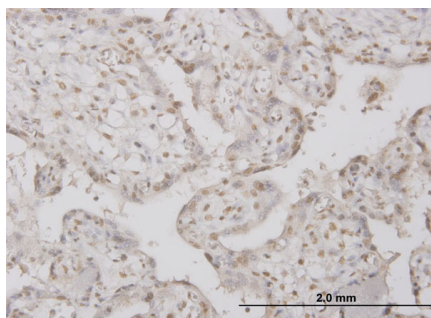
References

Phosphatase inhibitor 2 promotes acetylation of tubulin in the primary cilium of human retinal epithelial cells. Wang W, et al. BMC Cell Biol, 2008 Nov 26. PMID 19036150. Phosphatase inhibitor-2 balances protein phosphatase 1 and aurora B kinase for chromosome segregation and cytokinesis in human retinal epithelial cells. Wang W, et al. Mol Biol Cell, 2008 Nov. PMID 18716057. Large-scale mapping of human protein-protein interactions by mass spectrometry. Ewing RM, et al. Mol Syst Biol, 2007. PMID 17353931. Global, in vivo, and site-specific phosphorylation dynamics in signaling networks. Olsen JV, et al. Cell, 2006 Nov 3. PMID 17081983. The protein phosphatase-1/inhibitor-2 complex differentially regulates GSK3 dephosphorylation and increases sarcoplasmic/endoplasmic reticulum calcium ATPase 2 levels. King TD, et al. Exp Cell Res, 2006 Nov 1. PMID 16987514.

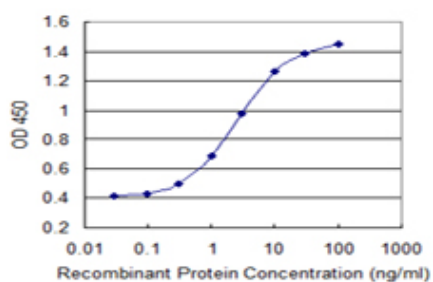
Images



Antibody Reactive Against Recombinant Protein. Western Blot detection against Immunogen (36.74 KDa) .



Immunoperoxidase of monoclonal antibody to PPP1R2 on formalin-fixed paraffin-embedded human placenta. [antibody concentration 3 ug/ml]



Detection limit for recombinant GST tagged PPP1R2 is 0.1 ng/ml as a capture antibody.

Please note: All products are 'FOR RESEARCH USE ONLY. NOT FOR USE IN DIAGNOSTIC OR THERAPEUTIC PROCEDURES'.