

PPP2R2C Antibody (monoclonal) (M01)

Mouse monoclonal antibody raised against a partial recombinant PPP2R2C.

Catalog # AT3413a

Product Information

Application	WB, E
Primary Accession	Q9Y2T4
Other Accession	NM_020416
Reactivity	Human
Host	mouse
Clonality	monoclonal
Isotype	IgG1 Kappa
Clone Names	6D1
Calculated MW	51515

Additional Information

Gene ID	5522
Other Names	Serine/threonine-protein phosphatase 2A 55 kDa regulatory subunit B gamma isoform, IMYPNO1, PP2A subunit B isoform B55-gamma, PP2A subunit B isoform PR55-gamma, PP2A subunit B isoform R2-gamma, PP2A subunit B isoform gamma, PPP2R2C
Target/Specificity	PPP2R2C (NP_065149, 1 a.a. ~ 110 a.a) partial recombinant protein with GST tag. MW of the GST tag alone is 26 KDa.
Dilution	WB~~1:500~1000 E~~N/A
Format	Clear, colorless solution in phosphate buffered saline, pH 7.2 .
Storage	Store at -20°C or lower. Aliquot to avoid repeated freezing and thawing.
Precautions	PPP2R2C Antibody (monoclonal) (M01) is for research use only and not for use in diagnostic or therapeutic procedures.

Background

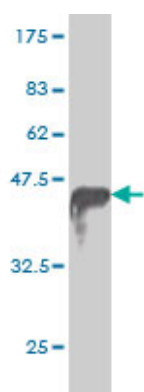
The product of this gene belongs to the phosphatase 2 regulatory subunit B family. Protein phosphatase 2 is one of the four major Ser/Thr phosphatases, and it is implicated in the negative control of cell growth and division. It consists of a common heteromeric core enzyme, which is composed of a catalytic subunit and a constant regulatory subunit, that associates with a variety of regulatory subunits. The B regulatory subunit might modulate substrate selectivity and catalytic activity. This gene encodes a gamma isoform of the regulatory subunit B55 subfamily. Alternatively spliced transcript variants encoding different isoforms have been identified.

References

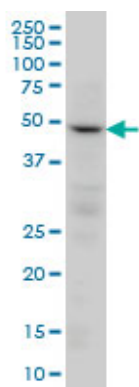
1. PPP2R2C Loss Promotes Castration-Resistance and Is Associated with Increased Prostate Cancer-Specific Mortality. Bluemn EG, Spencer ES, Mecham B, Gordon RR, Coleman I, Lewinshtein D, Mostaghel E, Zhang X, Annis J, Grandori C, Porter C, Nelson P. *Mol Cancer Res*. 2013 Jun;11(6):568-78. doi: 10.1158/1541-7786.MCR-12-0710. Epub 2013 Mar 14.

2. Association of decreased expression of protein phosphatase 2A subunit PR55 γ (PPP2R2C) with an increased risk of metastases and prostate cancer-specific mortality. Spencer ES, Bluemn EG, Johnston R, Zhang X, Gordon RR, Lewinshtein D, Lucas J, Nelson P, Porter CR. *J Clin Oncol (Meeting Abstracts)* May 2012 vol. 30 no. 15_suppl 4669

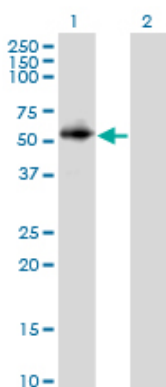
Images



Antibody Reactive Against Recombinant Protein. Western Blot detection against Immunogen (37.84 KDa) .



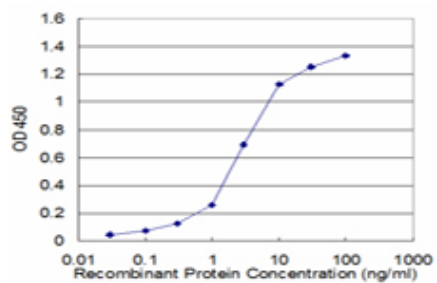
PPP2R2C monoclonal antibody (M01), clone 6D1 Western Blot analysis of PPP2R2C expression in HeLa (Cat # AT3413a)



Western Blot analysis of PPP2R2C expression in transfected 293T cell line by PPP2R2C monoclonal antibody (M01), clone 6D1.

Lane 1: PPP2R2C transfected lysate (49.5 KDa).
Lane 2: Non-transfected lysate.

Detection limit for recombinant GST tagged PPP2R2C is approximately 0.1 ng/ml as a capture antibody.



Please note: All products are 'FOR RESEARCH USE ONLY. NOT FOR USE IN DIAGNOSTIC OR THERAPEUTIC PROCEDURES'.