

## PRL Antibody (monoclonal) (M04)

Mouse monoclonal antibody raised against a full length recombinant PRL.

Catalog # AT3438a

### Product Information

---

<b>Application</b>	WB, E
<b>Primary Accession</b>	<a href="#">P01236</a>
<b>Other Accession</b>	<a href="#">BC015850</a>
<b>Reactivity</b>	Human
<b>Host</b>	mouse
<b>Clonality</b>	monoclonal
<b>Isotype</b>	IgG2a Kappa
<b>Clone Names</b>	1A8
<b>Calculated MW</b>	25876

### Additional Information

---

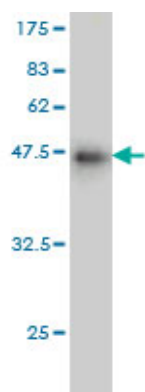
<b>Gene ID</b>	5617
<b>Other Names</b>	Prolactin, PRL, PRL
<b>Target/Specificity</b>	PRL (AAH15850, 29 a.a. ~ 227 a.a) full-length recombinant protein with GST tag. MW of the GST tag alone is 26 KDa.
<b>Dilution</b>	WB~~1:500~1000 E~~N/A
<b>Format</b>	Clear, colorless solution in phosphate buffered saline, pH 7.2 .
<b>Storage</b>	Store at -20°C or lower. Aliquot to avoid repeated freezing and thawing.
<b>Precautions</b>	PRL Antibody (monoclonal) (M04) is for research use only and not for use in diagnostic or therapeutic procedures.

### References

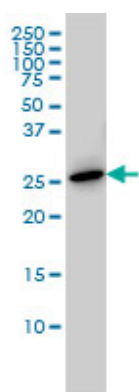
---

Examination of genetic polymorphisms in newborns for signatures of sex-specific prenatal selection. Ucisik-Akkaya E, et al. Mol Hum Reprod, 2010 Oct. PMID 20587610.No association between oxytocin or prolactin gene variants and childhood-onset mood disorders. Strauss JS, et al. Psychoneuroendocrinology, 2010 Oct. PMID 20547007.Obligate ordered binding of human lactogenic cytokines. Voorhees JL, et al. J Biol Chem, 2010 Jun 25. PMID 20427283.L-type voltage-dependent calcium channel alpha subunit 1C is a novel candidate gene associated with secondary hyperparathyroidism: an application of haplotype-based analysis for multiple linked single nucleotide polymorphisms. Yokoyama K, et al. Nephron Clin Pract, 2010. PMID 20424473.HLA class II, MICA and PRL gene polymorphisms: the common contribution to the systemic lupus erythematosus development in Czech population. Fojt?kov? M, et al. Rheumatol Int, 2010 Mar 30. PMID 20352225.

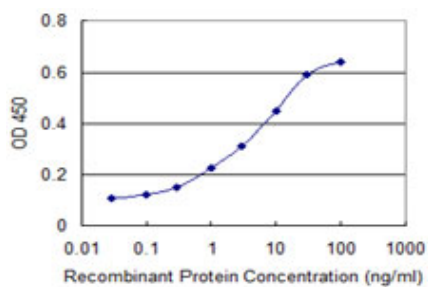
## Images



Antibody Reactive Against Recombinant Protein. Western Blot detection against Immunogen (47.63 KDa) .



PRL monoclonal antibody (M04), clone 1A8 Western Blot analysis of PRL expression in HeLa S3 NE ( (Cat # AT3438a )



Detection limit for recombinant GST tagged PRL is approximately 0.3ng/ml as a capture antibody.

Please note: All products are 'FOR RESEARCH USE ONLY. NOT FOR USE IN DIAGNOSTIC OR THERAPEUTIC PROCEDURES'.