

PRPS1L1 Antibody (monoclonal) (M01)

Mouse monoclonal antibody raised against a partial recombinant PRPS1L1.

Catalog # AT3443a

Product Information

Application	WB
Primary Accession	P21108
Other Accession	NM_175886
Reactivity	Human, Mouse, Rat
Host	mouse
Clonality	monoclonal
Isotype	IgG3 Kappa
Clone Names	5E11
Calculated MW	34839

Additional Information

Gene ID	221823
Other Names	Ribose-phosphate pyrophosphokinase 3, Phosphoribosyl pyrophosphate synthase 1-like 1, PRPS1-like 1, Phosphoribosyl pyrophosphate synthase III, PRS-III, PRPS1L1, PRPS3, PRPSL
Target/Specificity	PRPS1L1 (NP_787082, 146 a.a. ~ 243 a.a) partial recombinant protein with GST tag. MW of the GST tag alone is 26 KDa.
Dilution	WB~~1:500~1000
Format	Clear, colorless solution in phosphate buffered saline, pH 7.2 .
Storage	Store at -20°C or lower. Aliquot to avoid repeated freezing and thawing.
Precautions	PRPS1L1 Antibody (monoclonal) (M01) is for research use only and not for use in diagnostic or therapeutic procedures.

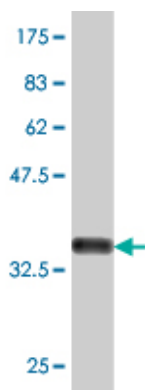
Background

This intronless gene is specifically expressed in the testis, and encodes a protein that is highly homologous to the two subunits of phosphoribosylpyrophosphate synthetase encoded by human X-linked genes, PRPS1 and PRPS2. These enzymes convert pyrimidine, purine or pyridine bases to the corresponding ribonucleoside monophosphates. In vitro transcription/translation and site-directed mutagenesis studies indicate that translation of this mRNA initiates exclusively at a non-AUG (ACG) codon.

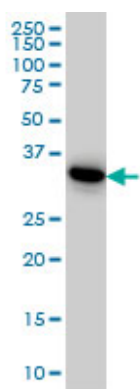
References

Generation and initial analysis of more than 15,000 full-length human and mouse cDNA sequences. Strausberg RL, et al. Proc Natl Acad Sci U S A, 2002 Dec 24. PMID 12477932. The sequence of the human genome. Venter JC, et al. Science, 2001 Feb 16. PMID 11181995. A human testis-specific mRNA for phosphoribosylpyrophosphate synthetase that initiates from a non-AUG codon. Taira M, et al. J Biol Chem, 1990 Sep 25. PMID 2168892. Promoter regions of the human X-linked housekeeping genes PRPS1 and PRPS2 encoding phosphoribosylpyrophosphate synthetase subunit I and II isoforms. Ishizuka T, et al. Biochim Biophys Acta, 1992 Mar 24. PMID 1314091.

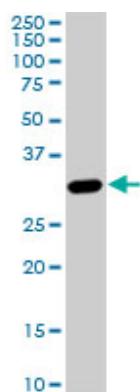
Images



Antibody Reactive Against Recombinant Protein. Western Blot detection against Immunogen (36.52 KDa) .

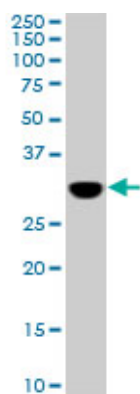


PRPS1L1 monoclonal antibody (M01), clone 5E10 Western Blot analysis of PRPS1L1 expression in HeLa ((Cat # AT3443a)

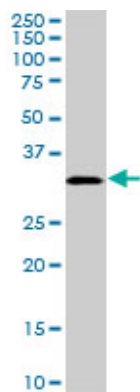


PRPS1L1 monoclonal antibody (M01), clone 5E10. Western Blot analysis of PRPS1L1 expression in PC-12 ((Cat # AT3443a)

PRPS1L1 monoclonal antibody (M01), clone 5E10. Western Blot analysis of PRPS1L1 expression in Raw 264.7 ((Cat # AT3443a)



PRPS1L1 monoclonal antibody (M01), clone 5E10.
Western Blot analysis of PRPS1L1 expression in NIH/3T3 (Cat # AT3443a)



Please note: All products are 'FOR RESEARCH USE ONLY. NOT FOR USE IN DIAGNOSTIC OR THERAPEUTIC PROCEDURES'.