

PSCD2 Antibody (monoclonal) (M02)

Mouse monoclonal antibody raised against a partial recombinant CYTH2.

Catalog # AT3450a

Product Information

Application	WB, IHC, IF, E
Primary Accession	Q99418
Other Accession	NM_017457
Reactivity	Human, Rat
Host	mouse
Clonality	monoclonal
Isotype	IgG2a Kappa
Clone Names	6H5
Calculated MW	46546

Additional Information

Gene ID	9266
Other Names	Cytohesin-2, ARF exchange factor, ARF nucleotide-binding site opener, Protein ARNO, PH, SEC7 and coiled-coil domain-containing protein 2, CYTH2, ARNO, PSCD2, PSCD2L
Target/Specificity	CYTH2 (NP_059431, 314 a.a. ~ 398 a.a) partial recombinant protein with GST tag. MW of the GST tag alone is 26 KDa.
Dilution	WB~~1:500~1000 IHC~~1:100~500 IF~~1:50~200 E~~N/A
Format	Clear, colorless solution in phosphate buffered saline, pH 7.2 .
Storage	Store at -20°C or lower. Aliquot to avoid repeated freezing and thawing.
Precautions	PSCD2 Antibody (monoclonal) (M02) is for research use only and not for use in diagnostic or therapeutic procedures.

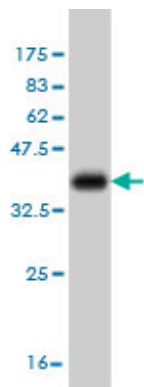
Background

The protein encoded by this gene is a member of the PSCD family. Members of this family have identical structural organization that consists of an N-terminal coiled-coil motif, a central Sec7 domain, and a C-terminal pleckstrin homology (PH) domain. The coiled-coil motif is involved in homodimerization, the Sec7 domain contains guanine-nucleotide exchange protein (GEP) activity, and the PH domain interacts with phospholipids and is responsible for association of PSCDs with membranes. Members of this family appear to mediate the regulation of protein sorting and membrane trafficking. The encoded protein exhibits GEP activity in vitro with ARF1, ARF3, and ARF6 and is 83% homologous to CYTH1. Two transcript variants encoding different isoforms have been found for this gene.

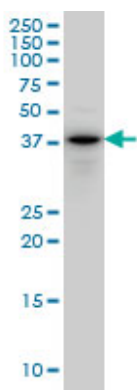
References

1. ARNO regulates VEGF-dependent tissue responses by stabilizing endothelial VEGFR-2 surface expression. Mannell HK, Pircher J, Chaudhry DI, Alig SK, Koch EG, Mettler R, Pohl U, Krotz F. Cardiovasc Res. 2011 Nov 7.

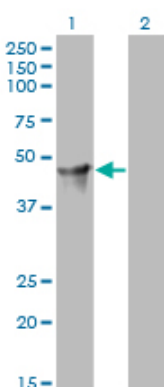
Images



Antibody Reactive Against Recombinant Protein. Western Blot detection against Immunogen (35.09 KDa) .

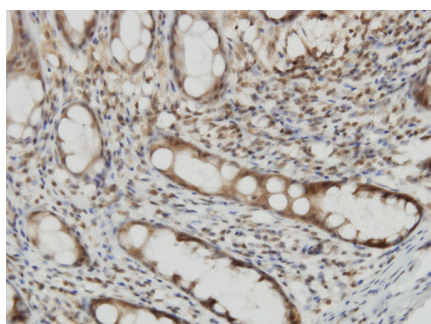


CYTH2 monoclonal antibody (M02), clone 6H5 Western Blot analysis of CYTH2 expression in PC-12 ((Cat # AT3450a)

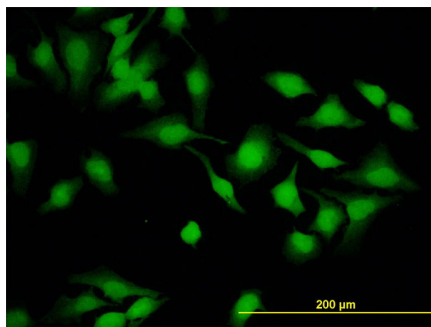


Western Blot analysis of CYTH2 expression in transfected 293T cell line by CYTH2 monoclonal antibody (M02), clone 6H5.

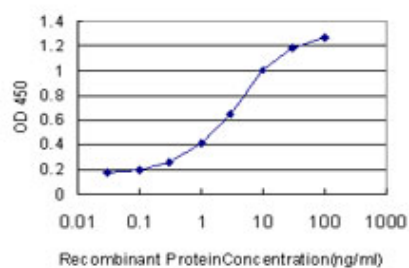
Lane 1: CYTH2 transfected lysate(46.5 KDa).
Lane 2: Non-transfected lysate.



Immunoperoxidase of monoclonal antibody to CYTH2 on formalin-fixed paraffin-embedded human colon. [antibody concentration 3 ug/ml]



Immunofluorescence of monoclonal antibody to CYTH2 on HeLa cell. [antibody concentration 10 ug/ml]



Detection limit for recombinant GST tagged CYTH2 is approximately 0.03ng/ml as a capture antibody.

Please note: All products are 'FOR RESEARCH USE ONLY. NOT FOR USE IN DIAGNOSTIC OR THERAPEUTIC PROCEDURES'.