

PSIP1 Antibody (monoclonal) (M01)

Mouse monoclonal antibody raised against a full length recombinant PSIP1.

Catalog # AT3452a

Product Information

Application	WB, IHC, E
Primary Accession	O75475
Other Accession	BC033817
Reactivity	Human
Host	mouse
Clonality	monoclonal
Isotype	IgG1 kappa
Clone Names	3H1
Calculated MW	60103

Additional Information

Gene ID	11168
Other Names	PC4 and SFRS1-interacting protein, CLL-associated antigen KW-7, Dense fine speckles 70 kDa protein, DFS 70, Lens epithelium-derived growth factor, Transcriptional coactivator p75/p52, PSIP1, DFS70, LEDGF, PSIP2
Target/Specificity	PSIP1 (AAH33817, 1 a.a. ~ 50 a.a) full-length recombinant protein with GST tag. MW of the GST tag alone is 26 KDa.
Dilution	WB~~1:500~1000 IHC~~1:100~500 E~~N/A
Format	Clear, colorless solution in phosphate buffered saline, pH 7.2 .
Storage	Store at -20°C or lower. Aliquot to avoid repeated freezing and thawing.
Precautions	PSIP1 Antibody (monoclonal) (M01) is for research use only and not for use in diagnostic or therapeutic procedures.

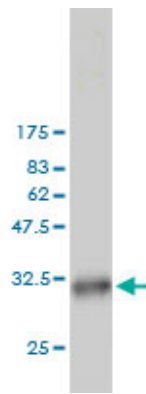
References

1.LEDGF/p75 functions downstream from preintegration complex formation to effect gene-specific HIV-1 integration.Shun MC, Raghavendra NK, Vandegraaff N, Daigle JE, Hughes S, Kellam P, Cherepanov P, Engelman A.Genes Dev. 2007 Jul 15;21(14):1767-78.

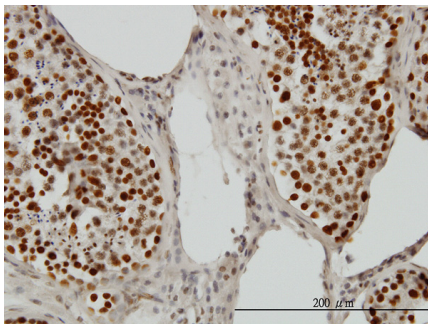
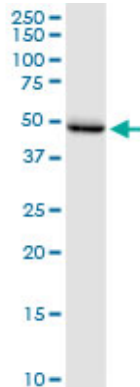
Images

Antibody Reactive Against Recombinant Protein.Western

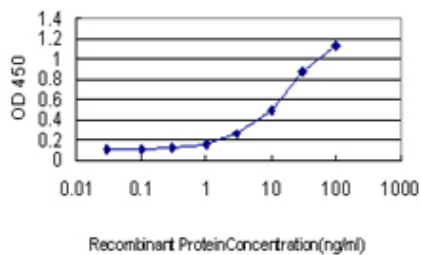
Blot detection against Immunogen (31.13 KDa) .



PSIP1 monoclonal antibody (M01), clone 3H1. Western Blot analysis of PSIP1 expression in human liver.



Immunoperoxidase of monoclonal antibody to PSIP1 on formalin-fixed paraffin-embedded human testis. [antibody concentration 3 ug/ml]



Detection limit for recombinant GST tagged PSIP1 is approximately 1ng/ml as a capture antibody.

Please note: All products are 'FOR RESEARCH USE ONLY. NOT FOR USE IN DIAGNOSTIC OR THERAPEUTIC PROCEDURES'.