

PSMA4 Antibody (monoclonal) (M01)

Mouse monoclonal antibody raised against a full length recombinant PSMA4.

Catalog # AT3454a

Product Information

Application	WB, IF, E
Primary Accession	P25789
Other Accession	BC005361
Reactivity	Human
Host	mouse
Clonality	monoclonal
Isotype	IgG2b kappa
Clone Names	2A10-E4
Calculated MW	29484

Additional Information

Gene ID	5685
Other Names	Proteasome subunit alpha type-4, Macropain subunit C9, Multicatalytic endopeptidase complex subunit C9, Proteasome component C9, Proteasome subunit L, PSMA4, HC9, PSC9
Target/Specificity	PSMA4 (AAH05361, 1 a.a. ~ 261 a.a) full-length recombinant protein with GST tag. MW of the GST tag alone is 26 KDa.
Dilution	WB~~1:500~1000 IF~~1:50~200 E~~N/A
Format	Clear, colorless solution in phosphate buffered saline, pH 7.2 .
Storage	Store at -20°C or lower. Aliquot to avoid repeated freezing and thawing.
Precautions	PSMA4 Antibody (monoclonal) (M01) is for research use only and not for use in diagnostic or therapeutic procedures.

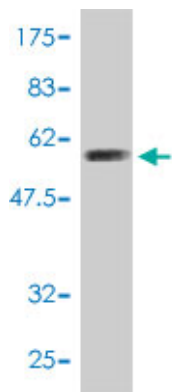
Background

The proteasome is a multicatalytic proteinase complex with a highly ordered ring-shaped 20S core structure. The core structure is composed of 4 rings of 28 non-identical subunits; 2 rings are composed of 7 alpha subunits and 2 rings are composed of 7 beta subunits. Proteasomes are distributed throughout eukaryotic cells at a high concentration and cleave peptides in an ATP/ubiquitin-dependent process in a non-lysosomal pathway. An essential function of a modified proteasome, the immunoproteasome, is the processing of class I MHC peptides. This gene encodes a member of the peptidase T1A family, that is a 20S core alpha subunit. Three alternatively spliced transcript variants encoding different isoforms have been found for this gene.

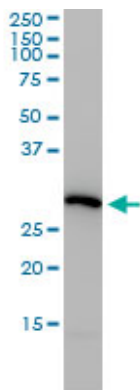
References

Fine mapping of chromosome 15q25.1 lung cancer susceptibility in African-Americans. Hansen HM, et al. Hum Mol Genet, 2010 Sep 15. PMID 20587604.Nicotinic acetylcholine receptor region on chromosome 15q25 and lung cancer risk among African Americans: a case-control study. Amos CI, et al. J Natl Cancer Inst, 2010 Aug 4. PMID 20554942.Association of genetic variants with hemorrhagic stroke in Japanese individuals. Yoshida T, et al. Int J Mol Med, 2010 Apr. PMID 20198315.Assessment of a polymorphism of SDK1 with hypertension in Japanese Individuals. Oguri M, et al. Am J Hypertens, 2010 Jan. PMID 19851296.Defining the human deubiquitinating enzyme interaction landscape. Sowa ME, et al. Cell, 2009 Jul 23. PMID 19615732.

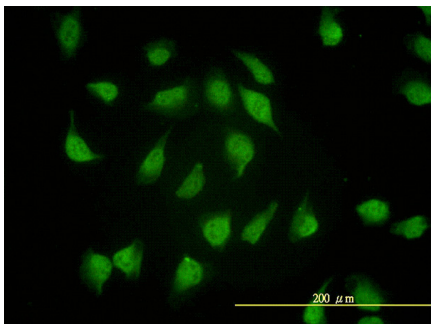
Images



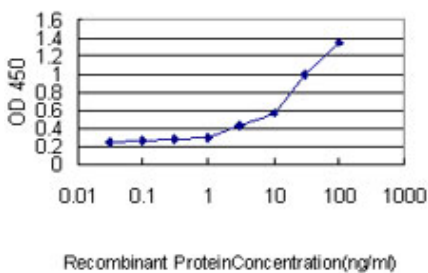
Antibody Reactive Against Recombinant Protein.Western Blot detection against Immunogen (54.45 KDa) .



PSMA4 monoclonal antibody (M01), clone 2A10-E4 Western Blot analysis of PSMA4 expression in HeLa ((Cat # AT3454a)



Immunofluorescence of monoclonal antibody to PSMA4 on HeLa cell. [antibody concentration 10 ug/ml]



Detection limit for recombinant GST tagged PSMA4 is approximately 3ng/ml as a capture antibody.

Please note: All products are 'FOR RESEARCH USE ONLY. NOT FOR USE IN DIAGNOSTIC OR THERAPEUTIC PROCEDURES'.