

PSMA8 Antibody (monoclonal) (M03)

Mouse monoclonal antibody raised against a partial recombinant PSMA8.

Catalog # AT3456a

Product Information

Application	WB
Primary Accession	Q8TAA3
Other Accession	NM_144662
Reactivity	Human, Mouse, Rat
Host	mouse
Clonality	monoclonal
Isotype	IgG1 Kappa
Clone Names	2E4
Calculated MW	28530

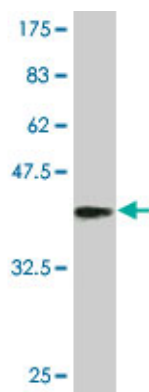
Additional Information

Gene ID	143471
Other Names	Proteasome subunit alpha type-7-like, PSMA8, PSMA7L
Target/Specificity	PSMA8 (NP_653263, 143 a.a. ~ 242 a.a) partial recombinant protein with GST tag. MW of the GST tag alone is 26 KDa.
Dilution	WB~~1:500~1000
Format	Clear, colorless solution in phosphate buffered saline, pH 7.2 .
Storage	Store at -20°C or lower. Aliquot to avoid repeated freezing and thawing.
Precautions	PSMA8 Antibody (monoclonal) (M03) is for research use only and not for use in diagnostic or therapeutic procedures.

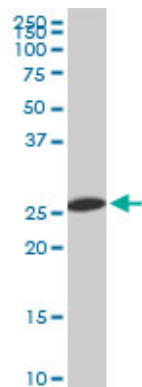
References

DNA sequence and analysis of human chromosome 18. Nusbaum C, et al. Nature, 2005 Sep 22. PMID 16177791. The status, quality, and expansion of the NIH full-length cDNA project: the Mammalian Gene Collection (MGC). Gerhard DS, et al. Genome Res, 2004 Oct. PMID 15489334. Generation and initial analysis of more than 15,000 full-length human and mouse cDNA sequences. Strausberg RL, et al. Proc Natl Acad Sci U S A, 2002 Dec 24. PMID 12477932. Mapping and structural dissection of human 20 S proteasome using proteomic approaches. Claverol S, et al. Mol Cell Proteomics, 2002 Aug. PMID 12376572.

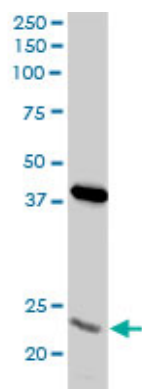
Images



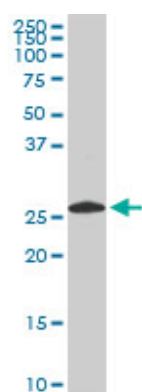
Antibody Reactive Against Recombinant Protein. Western Blot detection against Immunogen (36.74 KDa) .



PSMA8 monoclonal antibody (M03), clone 2E3. Western Blot analysis of PSMA8 expression in PC-12 (Cat # AT3456a)

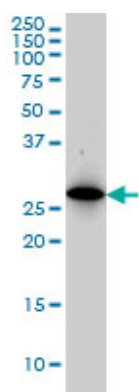


PSMA8 monoclonal antibody (M03), clone 2E3. Western Blot analysis of PSMA8 expression in Jurkat (Cat # AT3456a)



PSMA8 monoclonal antibody (M03), clone 2E3. Western Blot analysis of PSMA8 expression in NIH/3T3 (Cat # AT3456a)

PSMA8 monoclonal antibody (M03), clone 2E3 Western Blot analysis of PSMA8 expression in K-562 (Cat # AT3456a)



Please note: All products are 'FOR RESEARCH USE ONLY. NOT FOR USE IN DIAGNOSTIC OR THERAPEUTIC PROCEDURES'.