

PSMB6 Antibody (monoclonal) (M01)

Mouse monoclonal antibody raised against a full length recombinant PSMB6.

Catalog # AT3461a

Product Information

Application	WB, IHC, E
Primary Accession	P28072
Other Accession	BC000835
Reactivity	Human
Host	mouse
Clonality	monoclonal
Isotype	IgG1 Kappa
Clone Names	2A3-5A8
Calculated MW	25358

Additional Information

Gene ID	5694
Other Names	Proteasome subunit beta type-6, Macropain delta chain, Multicatalytic endopeptidase complex delta chain, Proteasome delta chain, Proteasome subunit Y, PSMB6, LMPY, Y
Target/Specificity	PSMB6 (AAH00835, 1 a.a. ~ 239 a.a) full-length recombinant protein with GST tag. MW of the GST tag alone is 26 KDa.
Dilution	WB~~1:500~1000 IHC~~1:100~500 E~~N/A
Format	Clear, colorless solution in phosphate buffered saline, pH 7.2 .
Storage	Store at -20°C or lower. Aliquot to avoid repeated freezing and thawing.
Precautions	PSMB6 Antibody (monoclonal) (M01) is for research use only and not for use in diagnostic or therapeutic procedures.

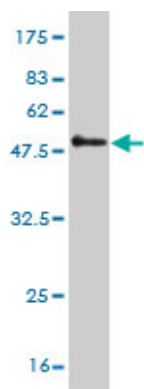
Background

The proteasome is a multicatalytic proteinase complex with a highly ordered ring-shaped 20S core structure. The core structure is composed of 4 rings of 28 non-identical subunits; 2 rings are composed of 7 alpha subunits and 2 rings are composed of 7 beta subunits. Proteasomes are distributed throughout eukaryotic cells at a high concentration and cleave peptides in an ATP/ubiquitin-dependent process in a non-lysosomal pathway. An essential function of a modified proteasome, the immunoproteasome, is the processing of class I MHC peptides. This gene encodes a member of the proteasome B-type family, also known as the T1B family, that is a 20S core beta subunit in the proteasome. This catalytic subunit is not present in the immunoproteasome and is replaced by catalytic subunit 1i (proteasome beta 9 subunit).

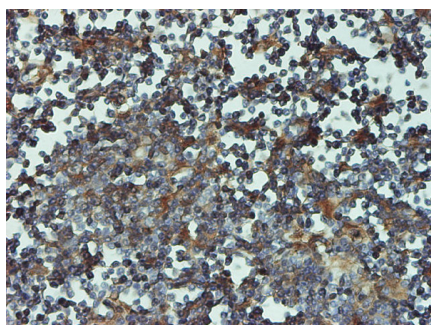
References

Defining the human deubiquitinating enzyme interaction landscape. Sowa ME, et al. Cell, 2009 Jul 23. PMID 19615732. A human protein-protein interaction network: a resource for annotating the proteome. Stelzl U, et al. Cell, 2005 Sep 23. PMID 16169070. The status, quality, and expansion of the NIH full-length cDNA project: the Mammalian Gene Collection (MGC). Gerhard DS, et al. Genome Res, 2004 Oct. PMID 15489334. Mammalian Cdh1/Fzr mediates its own degradation. Listovsky T, et al. EMBO J, 2004 Apr 7. PMID 15029244. Protein-protein interactions among human 20S proteasome subunits and proteasemblin. Jayarapu K, et al. Biochem Biophys Res Commun, 2004 Feb 6. PMID 14733938.

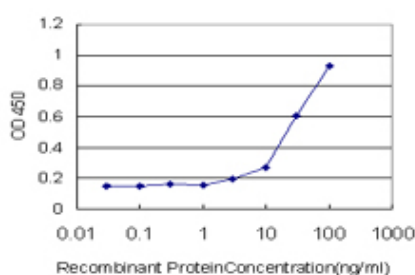
Images



Antibody Reactive Against Recombinant Protein. Western Blot detection against Immunogen (52.03 KDa) .



Immunoperoxidase of monoclonal antibody to PSMB6 on formalin-fixed paraffin-embedded human lymph node tissue. [antibody concentration 1 ~ 10 ug/ml]



Detection limit for recombinant GST tagged PSMB6 is approximately 3ng/ml as a capture antibody.

Please note: All products are 'FOR RESEARCH USE ONLY. NOT FOR USE IN DIAGNOSTIC OR THERAPEUTIC PROCEDURES'.