

# PSMB6 Antibody (monoclonal) (M02)

Mouse monoclonal antibody raised against a full length recombinant PSMB6.

Catalog # AT3462a

## Product Information

---

<b>Application</b>	WB, IHC, IF, E
<b>Primary Accession</b>	<a href="#">P28072</a>
<b>Other Accession</b>	<a href="#">BC000835</a>
<b>Reactivity</b>	Human
<b>Host</b>	mouse
<b>Clonality</b>	monoclonal
<b>Isotype</b>	IgG2b Kappa
<b>Clone Names</b>	S51
<b>Calculated MW</b>	25358

## Additional Information

---

<b>Gene ID</b>	5694
<b>Other Names</b>	Proteasome subunit beta type-6, Macropain delta chain, Multicatalytic endopeptidase complex delta chain, Proteasome delta chain, Proteasome subunit Y, PSMB6, LMPY, Y
<b>Target/Specificity</b>	PSMB6 (AAH00835, 1 a.a. ~ 239 a.a) full-length recombinant protein with GST tag. MW of the GST tag alone is 26 KDa.
<b>Dilution</b>	WB~~1:500~1000 IHC~~1:100~500 IF~~1:50~200 E~~N/A
<b>Format</b>	Clear, colorless solution in phosphate buffered saline, pH 7.2 .
<b>Storage</b>	Store at -20°C or lower. Aliquot to avoid repeated freezing and thawing.
<b>Precautions</b>	PSMB6 Antibody (monoclonal) (M02) is for research use only and not for use in diagnostic or therapeutic procedures.

## Background

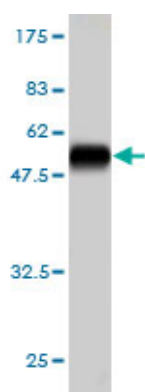
---

The proteasome is a multicatalytic proteinase complex with a highly ordered ring-shaped 20S core structure. The core structure is composed of 4 rings of 28 non-identical subunits; 2 rings are composed of 7 alpha subunits and 2 rings are composed of 7 beta subunits. Proteasomes are distributed throughout eukaryotic cells at a high concentration and cleave peptides in an ATP/ubiquitin-dependent process in a non-lysosomal pathway. An essential function of a modified proteasome, the immunoproteasome, is the processing of class I MHC peptides. This gene encodes a member of the proteasome B-type family, also known as the T1B family, that is a 20S core beta subunit in the proteasome. This catalytic subunit is not present in the immunoproteasome and is replaced by catalytic subunit 1i (proteasome beta 9 subunit).

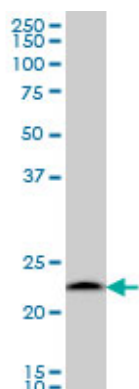
## References

Defining the human deubiquitinating enzyme interaction landscape. Sowa ME, et al. Cell, 2009 Jul 23. PMID 19615732. A human protein-protein interaction network: a resource for annotating the proteome. Stelzl U, et al. Cell, 2005 Sep 23. PMID 16169070. The status, quality, and expansion of the NIH full-length cDNA project: the Mammalian Gene Collection (MGC). Gerhard DS, et al. Genome Res, 2004 Oct. PMID 15489334. Mammalian Cdh1/Fzr mediates its own degradation. Listovsky T, et al. EMBO J, 2004 Apr 7. PMID 15029244. Protein-protein interactions among human 20S proteasome subunits and proteasomem. Jayarapu K, et al. Biochem Biophys Res Commun, 2004 Feb 6. PMID 14733938.

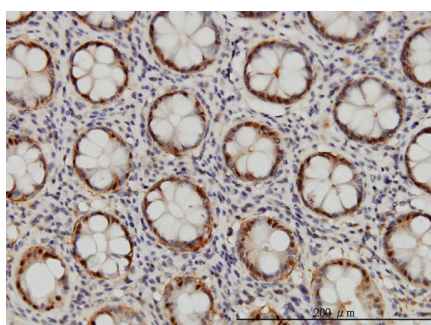
## Images



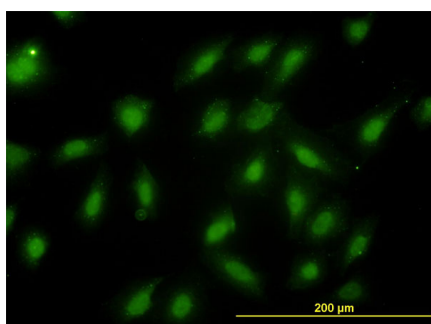
Antibody Reactive Against Recombinant Protein. Western Blot detection against Immunogen (52.03 KDa) .



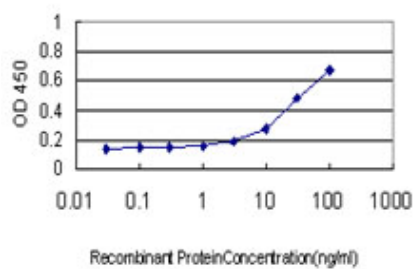
PSMB6 monoclonal antibody (M02), clone S51 Western Blot analysis of PSMB6 expression in A-431 (Cat # AT3462a )



Immunoperoxidase of monoclonal antibody to PSMB6 on formalin-fixed paraffin-embedded human colon. [antibody concentration 1 ug/ml]



Immunofluorescence of monoclonal antibody to PSMB6 on HeLa cell. [antibody concentration 10 ug/ml]



Detection limit for recombinant GST tagged PSMB6 is approximately 0.3ng/ml as a capture antibody.

Please note: All products are 'FOR RESEARCH USE ONLY. NOT FOR USE IN DIAGNOSTIC OR THERAPEUTIC PROCEDURES'.