

PSMD6 Antibody (monoclonal) (M01)

Mouse monoclonal antibody raised against a partial recombinant PSMD6.

Catalog # AT3471a

Product Information

Application	WB
Primary Accession	Q15008
Other Accession	NM_014814
Reactivity	Human
Host	mouse
Clonality	monoclonal
Isotype	IgG1 Kappa
Clone Names	1C1
Calculated MW	45531

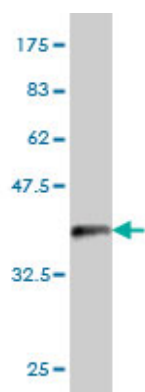
Additional Information

Gene ID	9861
Other Names	26S proteasome non-ATPase regulatory subunit 6, 26S proteasome regulatory subunit RPN7, 26S proteasome regulatory subunit S10, Breast cancer-associated protein SGA-113M, Phosphonoformate immuno-associated protein 4, Proteasome regulatory particle subunit p44S10, p42A, PSMD6, KIAA0107, PFAAP4
Target/Specificity	PSMD6 (NP_055629, 292 a.a. ~ 389 a.a) partial recombinant protein with GST tag. MW of the GST tag alone is 26 KDa.
Dilution	WB~~1:500~1000
Format	Clear, colorless solution in phosphate buffered saline, pH 7.2 .
Storage	Store at -20°C or lower. Aliquot to avoid repeated freezing and thawing.
Precautions	PSMD6 Antibody (monoclonal) (M01) is for research use only and not for use in diagnostic or therapeutic procedures.

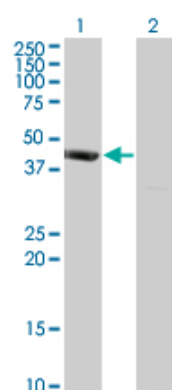
References

Defining the human deubiquitinating enzyme interaction landscape. Sowa ME, et al. Cell, 2009 Jul 23. PMID 19615732. Mammalian BTBD12/SLX4 assembles a Holliday junction resolvase and is required for DNA repair. Svendsen JM, et al. Cell, 2009 Jul 10. PMID 19596235. Genome-wide association study of vitamin B6, vitamin B12, folate, and homocysteine blood concentrations. Tanaka T, et al. Am J Hum Genet, 2009 Apr. PMID 19303062. Large-scale mapping of human protein-protein interactions by mass spectrometry. Ewing RM, et al. Mol Syst Biol, 2007. PMID 17353931. A novel ubiquitin-binding protein ZNF216 functioning in muscle

Images

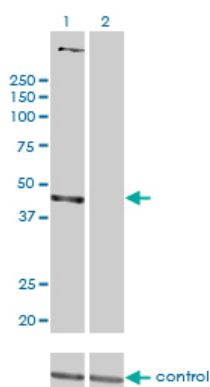


Antibody Reactive Against Recombinant Protein. Western Blot detection against Immunogen (36.52 KDa) .



Western Blot analysis of PSMD6 expression in transfected 293T cell line by PSMD6 monoclonal antibody (M01), clone 1C1.

Lane 1: PSMD6 transfected lysate(45.5 KDa).
Lane 2: Non-transfected lysate.



Western blot analysis of PSMD6 over-expressed 293 cell line, cotransfected with PSMD6 Validated Chimera RNAi (Cat # AT3471a)

Please note: All products are 'FOR RESEARCH USE ONLY. NOT FOR USE IN DIAGNOSTIC OR THERAPEUTIC PROCEDURES'.