

PSPH Antibody (monoclonal) (M02)

Mouse monoclonal antibody raised against a full length recombinant PSPH.

Catalog # AT3476a

Product Information

Application	WB, E
Primary Accession	P78330
Other Accession	BC063614
Reactivity	Human
Host	mouse
Clonality	monoclonal
Isotype	IgG1 kappa
Clone Names	2G9
Calculated MW	25008

Additional Information

Gene ID	5723
Other Names	Phosphoserine phosphatase, PSP, PSPase, L-3-phosphoserine phosphatase, O-phosphoserine phosphohydrolase, PSPH
Target/Specificity	PSPH (AAH63614, 1 a.a. ~ 225 a.a) full-length recombinant protein with GST tag. MW of the GST tag alone is 26 KDa.
Dilution	WB~~1:500~1000 E~~N/A
Format	Clear, colorless solution in phosphate buffered saline, pH 7.2 .
Storage	Store at -20°C or lower. Aliquot to avoid repeated freezing and thawing.
Precautions	PSPH Antibody (monoclonal) (M02) is for research use only and not for use in diagnostic or therapeutic procedures.

Background

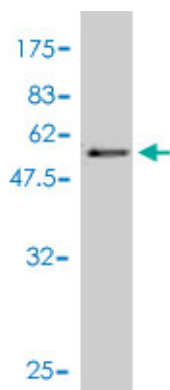
The protein encoded by this gene belongs to a subfamily of the phosphotransferases. This encoded enzyme is responsible for the third and last step in L-serine formation. It catalyzes magnesium-dependent hydrolysis of L-phosphoserine and is also involved in an exchange reaction between L-serine and L-phosphoserine. Deficiency of this protein is thought to be linked to Williams syndrome.

References

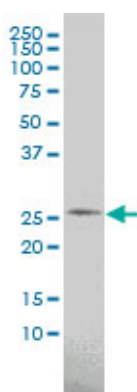
Large-scale mapping of human protein-protein interactions by mass spectrometry. Ewing RM, et al. Mol Syst Biol, 2007. PMID 17353931. The status, quality, and expansion of the NIH full-length cDNA project: the

Mammalian Gene Collection (MGC). Gerhard DS, et al. Genome Res, 2004 Oct. PMID 15489334. How calcium inhibits the magnesium-dependent enzyme human phosphoserine phosphatase. Peeraer Y, et al. Eur J Biochem, 2004 Aug. PMID 15291819. Complete sequencing and characterization of 21,243 full-length human cDNAs. Ota T, et al. Nat Genet, 2004 Jan. PMID 14702039. Mutations responsible for 3-phosphoserine phosphatase deficiency. Veiga-da-Cunha M, et al. Eur J Hum Genet, 2004 Feb. PMID 14673469.

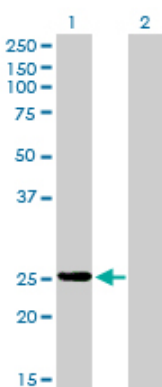
Images



Antibody Reactive Against Recombinant Protein. Western Blot detection against Immunogen (50.49 KDa) .

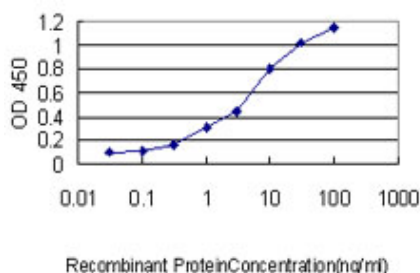


PSPH monoclonal antibody (M02), clone 2G9 Western Blot analysis of PSPH expression in K-562 (Cat # AT3476a)



Western Blot analysis of PSPH expression in transfected 293T cell line by PSPH monoclonal antibody (M02), clone 2G9.

Lane 1: PSPH transfected lysate (25 KDa).
Lane 2: Non-transfected lysate.



Detection limit for recombinant GST tagged PSPH is approximately 0.1 ng/ml as a capture antibody.