

PTGES2 Antibody (monoclonal) (M01)

Mouse monoclonal antibody raised against a partial recombinant PTGES2.

Catalog # AT3483a

Product Information

Application	WB, E
Primary Accession	Q9H7Z7
Other Accession	NM_025072
Reactivity	Human
Host	mouse
Clonality	monoclonal
Isotype	IgG1 Kappa
Clone Names	5B7
Calculated MW	41943

Additional Information

Gene ID	80142
Other Names	Prostaglandin E synthase 2, Membrane-associated prostaglandin E synthase-2, mPGE synthase-2, Microsomal prostaglandin E synthase 2, mPGES-2, Prostaglandin-H(2) E-isomerase, Prostaglandin E synthase 2 truncated form, PTGES2, C9orf15, PGES2
Target/Specificity	PTGES2 (NP_079348, 270 a.a. ~ 377 a.a) partial recombinant protein with GST tag. MW of the GST tag alone is 26 KDa.
Dilution	WB~~1:500~1000 E~~N/A
Format	Clear, colorless solution in phosphate buffered saline, pH 7.2 .
Storage	Store at -20°C or lower. Aliquot to avoid repeated freezing and thawing.
Precautions	PTGES2 Antibody (monoclonal) (M01) is for research use only and not for use in diagnostic or therapeutic procedures.

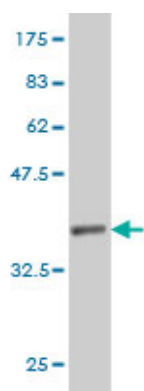
Background

The protein encoded by this gene is a membrane-associated prostaglandin E synthase, which catalyzes the conversion of prostaglandin H2 to prostaglandin E2. This protein also has been shown to activate the transcription regulated by a gamma-interferon-activated transcription element (GATE). Multiple transcript variants have been found for this gene.

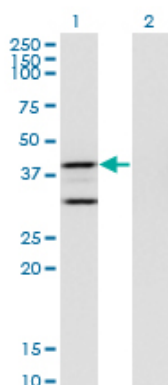
References

Microsomal prostaglandin E synthase-2: cellular distribution and expression in Alzheimer's disease. Chaudhry U, et al. *Exp Neurol*, 2010 Jun. PMID 19664621. Microsomal prostaglandin E synthase protein levels correlate with prognosis in colorectal cancer patients. Seo T, et al. *Virchows Arch*, 2009 Jun. PMID 19412621. Association analysis between the prostaglandin E synthase 2 R298H polymorphism and body mass index in 8079 participants of the KORA study cohort. Fischer A, et al. *Genet Test Mol Biomarkers*, 2009 Apr. PMID 19371221. The terminal prostaglandin synthases mPGES-1, mPGES-2, and cPGES are all overexpressed in human gliomas. Mattila S, et al. *Neuropathology*, 2009 Apr. PMID 19347995. Determination of genetic predisposition to patent ductus arteriosus in preterm infants. Dagle JM, et al. *Pediatrics*, 2009 Apr. PMID 19336370.

Images



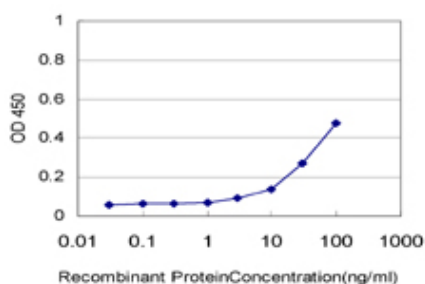
Antibody Reactive Against Recombinant Protein. Western Blot detection against Immunogen (37.62 KDa) .



Western Blot analysis of PTGES2 expression in transfected 293T cell line by PTGES2 monoclonal antibody (M01), clone 5B7.

Lane 1: PTGES2 transfected lysate (Predicted MW: 41.9 KDa).

Lane 2: Non-transfected lysate.



Detection limit for recombinant GST tagged PTGES2 is approximately 3ng/ml as a capture antibody.

Please note: All products are 'FOR RESEARCH USE ONLY. NOT FOR USE IN DIAGNOSTIC OR THERAPEUTIC PROCEDURES'.