

PWP1 Antibody (monoclonal) (M01)

Mouse monoclonal antibody raised against a full length recombinant PWP1.

Catalog # AT3503a

Product Information

Application	WB, IF, E
Primary Accession	Q13610
Other Accession	BC001652
Reactivity	Human
Host	mouse
Clonality	monoclonal
Isotype	IgG2b Kappa
Clone Names	3A11
Calculated MW	55828

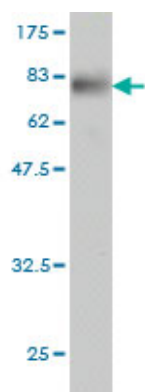
Additional Information

Gene ID	11137
Other Names	Periodic tryptophan protein 1 homolog, Keratinocyte protein IEF SSP 9502, PWP1
Target/Specificity	PWP1 (AAH01652, 1 a.a. ~ 501 a.a) full-length recombinant protein with GST tag. MW of the GST tag alone is 26 KDa.
Dilution	WB~~1:500~1000 IF~~1:50~200 E~~N/A
Format	Clear, colorless solution in phosphate buffered saline, pH 7.2 .
Storage	Store at -20°C or lower. Aliquot to avoid repeated freezing and thawing.
Precautions	PWP1 Antibody (monoclonal) (M01) is for research use only and not for use in diagnostic or therapeutic procedures.

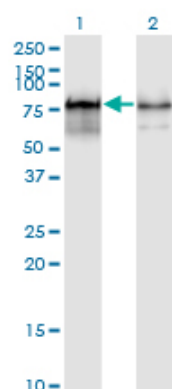
References

Identification and characterization of endonuclein binding proteins: evidence of modulatory effects on signal transduction and chaperone activity. Ludvigsen M, et al. BMC Biochem, 2009 Dec 22. PMID 20028516. Global, in vivo, and site-specific phosphorylation dynamics in signaling networks. Olsen JV, et al. Cell, 2006 Nov 3. PMID 17081983. Phosphoproteome analysis of the human mitotic spindle. Nousiainen M, et al. Proc Natl Acad Sci U S A, 2006 Apr 4. PMID 16565220. High-throughput mapping of a dynamic signaling network in mammalian cells. Barrios-Rodiles M, et al. Science, 2005 Mar 11. PMID 15761153. Large-scale characterization of HeLa cell nuclear phosphoproteins. Beausoleil SA, et al. Proc Natl Acad Sci U S A, 2004 Aug 17. PMID 15302935.

Images



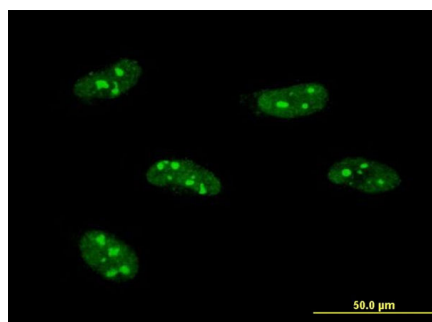
Antibody Reactive Against Recombinant Protein. Western Blot detection against Immunogen (80.85 KDa) .



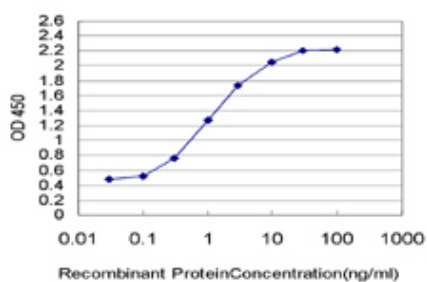
Western Blot analysis of PWP1 expression in transfected 293T cell line by PWP1 monoclonal antibody (M01), clone 3A11.

Lane 1: PWP1 transfected lysate (Predicted MW: 55.9 KDa).

Lane 2: Non-transfected lysate.



Immunofluorescence of monoclonal antibody to PWP1 on HeLa cell . [antibody concentration 10 ug/ml]



Detection limit for recombinant GST tagged PWP1 is approximately 0.03ng/ml as a capture antibody.

Please note: All products are 'FOR RESEARCH USE ONLY. NOT FOR USE IN DIAGNOSTIC OR THERAPEUTIC PROCEDURES'.