

# PYCRL Antibody (monoclonal) (M01)

Mouse monoclonal antibody raised against a partial recombinant PYCRL.

Catalog # AT3505a

## Product Information

---

<b>Application</b>	WB, IF, IP, E
<b>Primary Accession</b>	<a href="#">Q53H96</a>
<b>Other Accession</b>	<a href="#">NM_023078</a>
<b>Reactivity</b>	Human
<b>Host</b>	mouse
<b>Clonality</b>	monoclonal
<b>Isotype</b>	IgG2a Kappa
<b>Clone Names</b>	4F11
<b>Calculated MW</b>	28663

## Additional Information

---

<b>Gene ID</b>	65263
<b>Other Names</b>	Pyrroline-5-carboxylate reductase 3, P5C reductase 3, P5CR 3, Pyrroline-5-carboxylate reductase-like protein, PYCRL
<b>Target/Specificity</b>	PYCRL (NP_075566, 32 a.a. ~ 131 a.a) partial recombinant protein with GST tag. MW of the GST tag alone is 26 KDa.
<b>Dilution</b>	WB~~1:500~1000 IF~~1:50~200 IP~~N/A E~~N/A
<b>Format</b>	Clear, colorless solution in phosphate buffered saline, pH 7.2 .
<b>Storage</b>	Store at -20°C or lower. Aliquot to avoid repeated freezing and thawing.
<b>Precautions</b>	PYCRL Antibody (monoclonal) (M01) is for research use only and not for use in diagnostic or therapeutic procedures.

## References

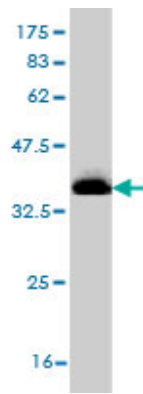
---

1.Functional specialization in proline biosynthesis of melanoma.De Ingeniis J, Ratnikov B, Richardson AD, Scott DA, Aza-Blanc P, De SK, Kazanov M, Pellicchia M, Ronai Z, Osterman AL, Smith JW.PLoS One. 2012;7(9):e45190. Epub 2012 Sep 14.

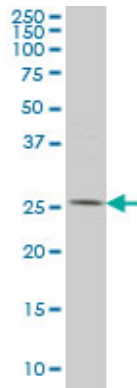
## Images

---

Antibody Reactive Against Recombinant Protein.Western Blot detection against Immunogen (36.74 KDa) .



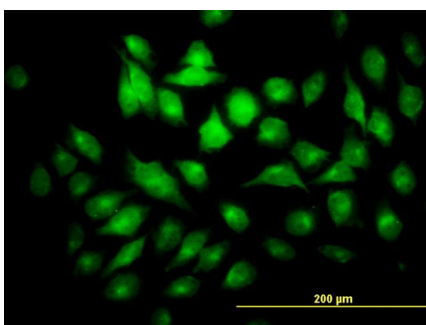
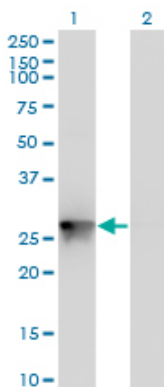
PYCRL monoclonal antibody (M01), clone 4F11 Western Blot analysis of PYCRL expression in HeLa ( Cat # AT3505a )



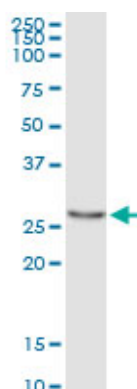
Western Blot analysis of PYCRL expression in transfected 293T cell line by PYCRL monoclonal antibody (M01), clone 4F11.

Lane 1: PYCRL transfected lysate (Predicted MW: 28.6 KDa).

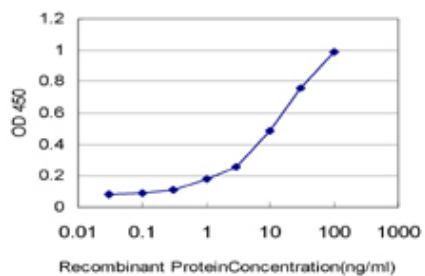
Lane 2: Non-transfected lysate.



Immunofluorescence of monoclonal antibody to PYCRL on HeLa cell. [antibody concentration 10 ug/ml]



Immunoprecipitation of PYCRL transfected lysate using anti-PYCRL monoclonal antibody and Protein A Magnetic Bead ([U0007](#)), and immunoblotted with PYCRL monoclonal antibody.



Detection limit for recombinant GST tagged PYCRL is approximately 0.3ng/ml as a capture antibody.

Please note: All products are 'FOR RESEARCH USE ONLY. NOT FOR USE IN DIAGNOSTIC OR THERAPEUTIC PROCEDURES'.