

## QPCT Antibody (monoclonal) (M01)

Mouse monoclonal antibody raised against a partial recombinant QPCT.

Catalog # AT3508a

### Product Information

---

<b>Application</b>	WB, E
<b>Primary Accession</b>	<a href="#">Q16769</a>
<b>Other Accession</b>	<a href="#">NM_012413</a>
<b>Reactivity</b>	Human
<b>Host</b>	mouse
<b>Clonality</b>	monoclonal
<b>Isotype</b>	IgG2a Kappa
<b>Clone Names</b>	4E12
<b>Calculated MW</b>	40877

### Additional Information

---

<b>Gene ID</b>	25797
<b>Other Names</b>	Glutaminyl-peptide cyclotransferase, Glutaminyl cyclase, QC, sQC, Glutaminyl-tRNA cyclotransferase, Glutamyl cyclase, EC, QPCT
<b>Target/Specificity</b>	QPCT (NP_036545, 262 a.a. ~ 359 a.a) partial recombinant protein with GST tag. MW of the GST tag alone is 26 KDa.
<b>Dilution</b>	WB~~1:500~1000 E~~N/A
<b>Format</b>	Clear, colorless solution in phosphate buffered saline, pH 7.2 .
<b>Storage</b>	Store at -20°C or lower. Aliquot to avoid repeated freezing and thawing.
<b>Precautions</b>	QPCT Antibody (monoclonal) (M01) is for research use only and not for use in diagnostic or therapeutic procedures.

### Background

---

This gene encodes human pituitary glutaminyl cyclase, which is responsible for the presence of pyroglutamyl residues in many neuroendocrine peptides. The amino acid sequence of this enzyme is 86% identical to that of bovine glutaminyl cyclase.

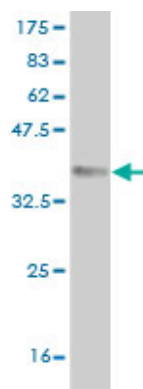
### References

---

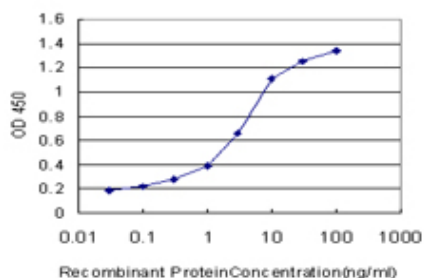
A genome-wide association scan of RR and QT interval duration in 3 European genetically isolated populations: the EUROSPAN project. Marroni F, et al. Circ Cardiovasc Genet, 2009 Aug. PMID 20031603. Mammalian glutaminyl cyclases and their isoenzymes have identical enzymatic characteristics.

Stephan A, et al. FEBS J, 2009 Nov. PMID 19804409. Isolation of an isoenzyme of human glutaminyl cyclase: retention in the Golgi complex suggests involvement in the protein maturation machinery. Cynis H, et al. J Mol Biol, 2008 Jun 20. PMID 18486145. Computational evidence for the catalytic mechanism of glutaminyl cyclase. A DFT investigation. Calvaresi M, et al. Proteins, 2008 Nov 15. PMID 18470930. A conserved hydrogen-bond network in the catalytic centre of animal glutaminyl cyclases is critical for catalysis. Huang KF, et al. Biochem J, 2008 Apr 1. PMID 18072935.

## Images



Antibody Reactive Against Recombinant Protein. Western Blot detection against Immunogen (36.52 KDa) .



Detection limit for recombinant GST tagged QPCT is approximately 0.03ng/ml as a capture antibody.

Please note: All products are 'FOR RESEARCH USE ONLY. NOT FOR USE IN DIAGNOSTIC OR THERAPEUTIC PROCEDURES'.