

RAB11A Antibody (monoclonal) (M01)

Mouse monoclonal antibody raised against a full length recombinant RAB11A.

Catalog # AT3510a

Product Information

| | |
|--------------------------|--------------------------|
| Application | WB, E |
| Primary Accession | P62491 |
| Other Accession | BC013348 |
| Reactivity | Human, Rat |
| Host | mouse |
| Clonality | monoclonal |
| Isotype | IgG1 kappa |
| Clone Names | 1F7-2A8 |
| Calculated MW | 24394 |

Additional Information

| | |
|---------------------------|--|
| Gene ID | 8766 |
| Other Names | Ras-related protein Rab-11A, Rab-11, YL8, RAB11A, RAB11 |
| Target/Specificity | RAB11A (AAH13348.1, 1 a.a. ~ 216 a.a) full-length recombinant protein with GST tag. MW of the GST tag alone is 26 KDa. |
| Dilution | WB~~1:500~1000 E~~N/A |
| Format | Clear, colorless solution in phosphate buffered saline, pH 7.2 . |
| Storage | Store at -20°C or lower. Aliquot to avoid repeated freezing and thawing. |
| Precautions | RAB11A Antibody (monoclonal) (M01) is for research use only and not for use in diagnostic or therapeutic procedures. |

Background

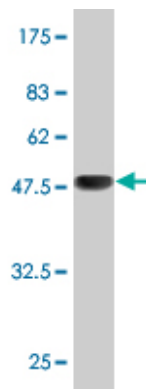
The protein encoded by this gene belongs to the small GTPase superfamily, Rab family. It is associated with both constitutive and regulated secretory pathways, and may be involved in protein transport.

References

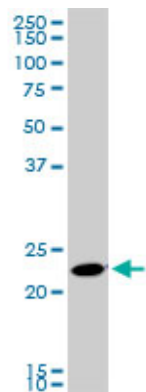
Interaction of the human prostacyclin receptor with Rab11: characterization of a novel Rab11 binding domain within alpha-helix 8 that is regulated by palmitoylation. Reid HM, et al. J Biol Chem, 2010 Jun 11. PMID 20395296. The Rab11 pathway is required for influenza A virus budding and filament formation. Bruce EA, et al. J Virol, 2010 Jun. PMID 20357086. Involvement of Rab9 and Rab11 in the intracellular trafficking of TRPC6. Cayouette S, et al. Biochim Biophys Acta, 2010 Jul. PMID 20346379. Coordination of Rab8 and Rab11

in primary ciliogenesis. Kn?dler A, et al. Proc Natl Acad Sci U S A, 2010 Apr 6. PMID 20308558.Rab11-FIP3 links the Rab11 GTPase and cytoplasmic dynein to mediate transport to the endosomal-recycling compartment. Horgan CP, et al. J Cell Sci, 2010 Jan 15. PMID 20026645.

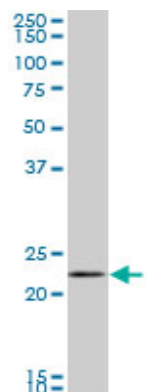
Images



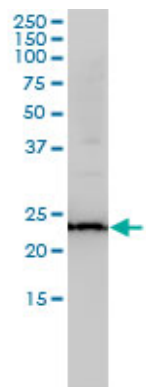
Antibody Reactive Against Recombinant Protein.Western Blot detection against Immunogen (49.5 KDa) .



RAB11A monoclonal antibody (M01), clone 1F7-2A8. Western Blot analysis of RAB11A expression in PC-12 (Cat # AT3510a)

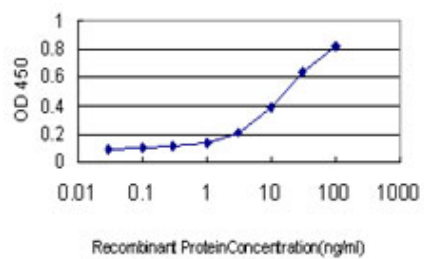


RAB11A monoclonal antibody (M01), clone 1F7-2A8. Western Blot analysis of RAB11A expression in HepG2 (Cat # AT3510a)



RAB11A monoclonal antibody (M01), clone 1F7-2A8 Western Blot analysis of RAB11A expression in K-562 (Cat # AT3510a)

Detection limit for recombinant GST tagged RAB11A is



approximately 1ng/ml as a capture antibody.

Please note: All products are 'FOR RESEARCH USE ONLY. NOT FOR USE IN DIAGNOSTIC OR THERAPEUTIC PROCEDURES'.