

RAB21 Antibody (monoclonal) (M01)

Mouse monoclonal antibody raised against a partial recombinant RAB21.

Catalog # AT3515a

Product Information

Application	WB, IHC, IF, E
Primary Accession	Q9UL25
Other Accession	NM_014999
Reactivity	Human
Host	mouse
Clonality	monoclonal
Isotype	IgG1 Kappa
Clone Names	1F6
Calculated MW	24348

Additional Information

Gene ID	23011
Other Names	Ras-related protein Rab-21, RAB21, KIAA0118
Target/Specificity	RAB21 (NP_055814, 116 a.a. ~ 225 a.a) partial recombinant protein with GST tag. MW of the GST tag alone is 26 KDa.
Dilution	WB~~1:500~1000 IHC~~1:100~500 IF~~1:50~200 E~~N/A
Format	Clear, colorless solution in phosphate buffered saline, pH 7.2 .
Storage	Store at -20°C or lower. Aliquot to avoid repeated freezing and thawing.
Precautions	RAB21 Antibody (monoclonal) (M01) is for research use only and not for use in diagnostic or therapeutic procedures.

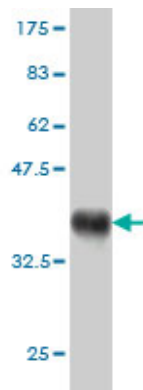
Background

RAB21 belongs to the RAB family of small GTP-binding proteins that regulate intracellular vesicle targeting (Opdam et al., 2000 [PubMed 10887961]).

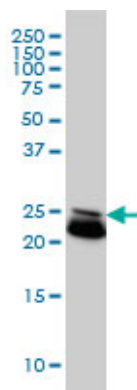
References

Role of Varp, a Rab21 exchange factor and TI-VAMP/VAMP7 partner, in neurite growth. Burgo A, et al. EMBO Rep, 2009 Oct. PMID 19745841. Integrin trafficking regulated by Rab21 is necessary for cytokinesis. Pellinen T, et al. Dev Cell, 2008 Sep. PMID 18804435. Structural basis for Rab GTPase activation by VPS9 domain exchange factors. Delprato A, et al. Nat Struct Mol Biol, 2007 May. PMID 17450153. Small GTPase Rab21 regulates cell adhesion and controls endosomal traffic of beta1-integrins. Pellinen T, et al. J Cell Biol, 2006

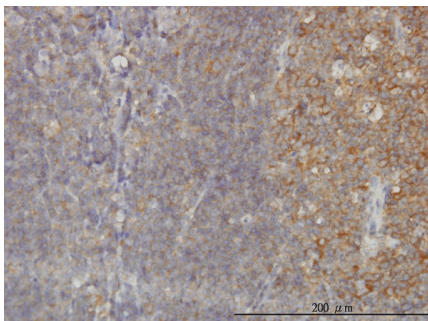
Images



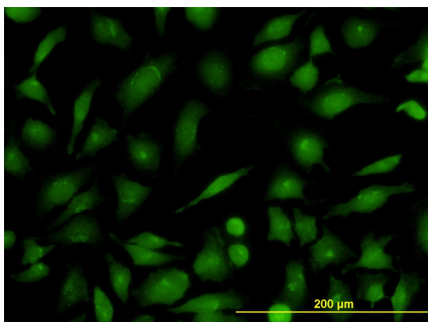
Antibody Reactive Against Recombinant Protein. Western Blot detection against Immunogen (37.84 KDa) .



RAB21 monoclonal antibody (M01), clone 1F6 Western Blot analysis of RAB21 expression in HeLa (Cat # AT3515a)

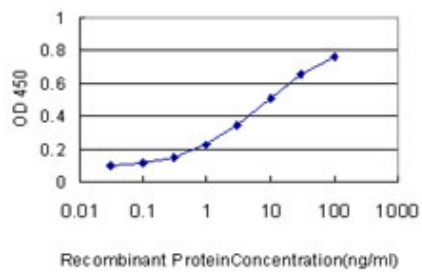


Immunoperoxidase of monoclonal antibody to RAB21 on formalin-fixed paraffin-embedded human tonsil. [antibody concentration 3 ug/ml]



Immunofluorescence of monoclonal antibody to RAB21 on HeLa cell. [antibody concentration 10 ug/ml]

Detection limit for recombinant GST tagged RAB21 is approximately 0.1 ng/ml as a capture antibody.



Please note: All products are 'FOR RESEARCH USE ONLY. NOT FOR USE IN DIAGNOSTIC OR THERAPEUTIC PROCEDURES'.