

## RAB2B Antibody (monoclonal) (M02)

Mouse monoclonal antibody raised against a partial recombinant RAB2B.

Catalog # AT3519a

### Product Information

---

<b>Application</b>	WB
<b>Primary Accession</b>	<a href="#">Q8WUD1</a>
<b>Other Accession</b>	<a href="#">NM_032846</a>
<b>Reactivity</b>	Human, Mouse
<b>Host</b>	mouse
<b>Clonality</b>	monoclonal
<b>Isotype</b>	IgG1 Kappa
<b>Clone Names</b>	7E5
<b>Calculated MW</b>	24214

### Additional Information

---

<b>Gene ID</b>	84932
<b>Other Names</b>	Ras-related protein Rab-2B, RAB2B
<b>Target/Specificity</b>	RAB2B (NP_116235, 127 a.a. ~ 216 a.a) partial recombinant protein with GST tag. MW of the GST tag alone is 26 KDa.
<b>Dilution</b>	WB~~1:500~1000
<b>Format</b>	Clear, colorless solution in phosphate buffered saline, pH 7.2 .
<b>Storage</b>	Store at -20°C or lower. Aliquot to avoid repeated freezing and thawing.
<b>Precautions</b>	RAB2B Antibody (monoclonal) (M02) is for research use only and not for use in diagnostic or therapeutic procedures.

### Background

---

Members of the Rab protein family are nontransforming monomeric GTP-binding proteins of the Ras superfamily that contain 4 highly conserved regions involved in GTP binding and hydrolysis. Rab proteins are prenylated, membrane-bound proteins involved in vesicular fusion and trafficking; see MIM 179508.

### References

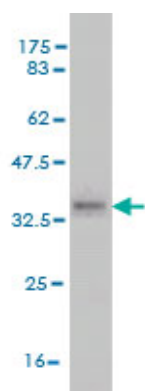
---

High-throughput mapping of a dynamic signaling network in mammalian cells. Barrios-Rodiles M, et al. Science, 2005 Mar 11. PMID 15761153. The status, quality, and expansion of the NIH full-length cDNA project: the Mammalian Gene Collection (MGC). Gerhard DS, et al. Genome Res, 2004 Oct. PMID 15489334. Circular rapid amplification of cDNA ends for high-throughput extension cloning of partial genes.

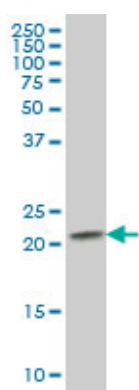
Fu GK, et al. Genomics, 2004 Jul. PMID 15203218. Complete sequencing and characterization of 21,243 full-length human cDNAs. Ota T, et al. Nat Genet, 2004 Jan. PMID 14702039. Generation and initial analysis of more than 15,000 full-length human and mouse cDNA sequences. Strausberg RL, et al. Proc Natl Acad Sci U S A, 2002 Dec 24. PMID 12477932.

## Images

---



Antibody Reactive Against Recombinant Protein. Western Blot detection against Immunogen (35.64 KDa) .



RAB2B monoclonal antibody (M02), clone 7E4. Western Blot analysis of RAB2B expression in Raw 264.7.

Please note: All products are 'FOR RESEARCH USE ONLY. NOT FOR USE IN DIAGNOSTIC OR THERAPEUTIC PROCEDURES'.