

RAB38 Antibody (monoclonal) (M02)

Mouse monoclonal antibody raised against a partial recombinant RAB38.

Catalog # AT3523a

Product Information

Application	WB, E
Primary Accession	P57729
Other Accession	NM_022337
Reactivity	Human
Host	mouse
Clonality	monoclonal
Isotype	IgG2b Kappa
Clone Names	7F1
Calculated MW	23712

Additional Information

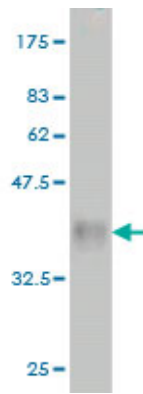
Gene ID	23682
Other Names	Ras-related protein Rab-38, Melanoma antigen NY-MEL-1, RAB38
Target/Specificity	RAB38 (NP_071732, 115 a.a. ~ 211 a.a) partial recombinant protein with GST tag. MW of the GST tag alone is 26 KDa.
Dilution	WB~~1:500~1000 E~~N/A
Format	Clear, colorless solution in phosphate buffered saline, pH 7.2 .
Storage	Store at -20°C or lower. Aliquot to avoid repeated freezing and thawing.
Precautions	RAB38 Antibody (monoclonal) (M02) is for research use only and not for use in diagnostic or therapeutic procedures.

References

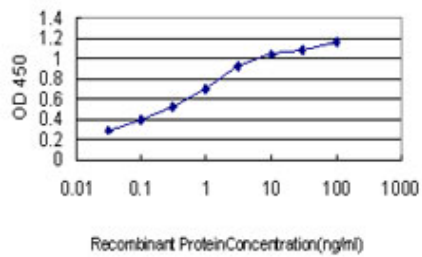
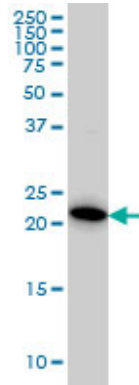
1.miRNA Expression Profiling in Melanocytes and Melanoma Cell Lines Reveals miRNAs Associated with Formation and Progression of Malignant Melanoma.Mueller DW, Rehli M, Bosserhoff AK.J Invest Dermatol. 2009 Jul;129(7):1740-51. Epub 2009 Feb 12.

Images

Antibody Reactive Against Recombinant Protein.Western Blot detection against Immunogen (36.41 KDa) .



RAB38 monoclonal antibody (M02), clone 7F1 Western Blot analysis of RAB38 expression in A-431 (Cat # AT3523a)



Detection limit for recombinant GST tagged RAB38 is approximately 0.03ng/ml as a capture antibody.

Please note: All products are 'FOR RESEARCH USE ONLY. NOT FOR USE IN DIAGNOSTIC OR THERAPEUTIC PROCEDURES'.