

## RAB42 Antibody (monoclonal) (M03)

Mouse monoclonal antibody raised against a partial recombinant RAB42.

Catalog # AT3527a

### Product Information

---

<b>Application</b>	WB, IHC, IF
<b>Primary Accession</b>	<a href="#">Q8N4Z0</a>
<b>Other Accession</b>	<a href="#">NM_152304</a>
<b>Reactivity</b>	Human
<b>Host</b>	mouse
<b>Clonality</b>	monoclonal
<b>Isotype</b>	IgG1 Kappa
<b>Clone Names</b>	3A2
<b>Calculated MW</b>	24133

### Additional Information

---

<b>Gene ID</b>	115273
<b>Other Names</b>	Putative Ras-related protein Rab-42, RAB42
<b>Target/Specificity</b>	RAB42 (NP_689517, 46 a.a. ~ 105 a.a) partial recombinant protein with GST tag. MW of the GST tag alone is 26 KDa.
<b>Dilution</b>	WB~~1:500~1000 IHC~~1:100~500 IF~~1:50~200
<b>Format</b>	Clear, colorless solution in phosphate buffered saline, pH 7.2 .
<b>Storage</b>	Store at -20°C or lower. Aliquot to avoid repeated freezing and thawing.
<b>Precautions</b>	RAB42 Antibody (monoclonal) (M03) is for research use only and not for use in diagnostic or therapeutic procedures.

### References

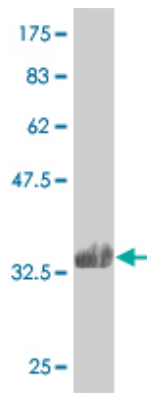
---

The DNA sequence and biological annotation of human chromosome 1. Gregory SG, et al. Nature, 2006 May 18. PMID 16710414. The status, quality, and expansion of the NIH full-length cDNA project: the Mammalian Gene Collection (MGC). Gerhard DS, et al. Genome Res, 2004 Oct. PMID 15489334. Generation and initial analysis of more than 15,000 full-length human and mouse cDNA sequences. Strausberg RL, et al. Proc Natl Acad Sci U S A, 2002 Dec 24. PMID 12477932.

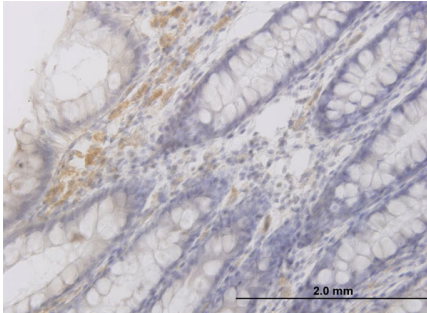
### Images

---

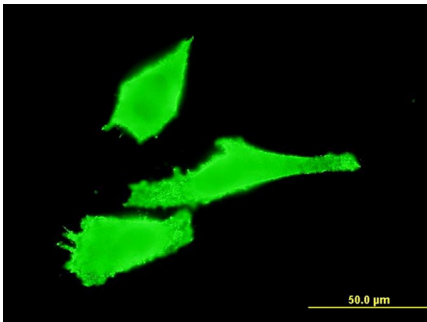
Antibody Reactive Against Recombinant Protein. Western



Blot detection against Immunogen (32.34 KDa) .



Immunoperoxidase of monoclonal antibody to RAB42 on formalin-fixed paraffin-embedded human colon. [antibody concentration 3 ug/ml]



Immunofluorescence of monoclonal antibody to RAB42 on HeLa cell . [antibody concentration 10 ug/ml]

Please note: All products are 'FOR RESEARCH USE ONLY. NOT FOR USE IN DIAGNOSTIC OR THERAPEUTIC PROCEDURES'.