

RAB6A Antibody (monoclonal) (M01)

Mouse monoclonal antibody raised against a partial recombinant RAB6A.

Catalog # AT3532a

Product Information

Application	WB, E
Primary Accession	P20340
Other Accession	BC003617
Reactivity	Human, Rat
Host	mouse
Clonality	monoclonal
Isotype	IgG2b Kappa
Clone Names	3G3
Calculated MW	23593

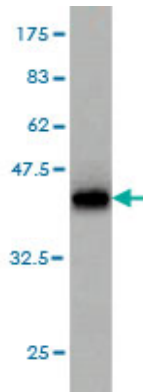
Additional Information

Gene ID	5870
Other Names	Ras-related protein Rab-6A, Rab-6, RAB6A, RAB6
Target/Specificity	RAB6A (AAH03617, 109 a.a. ~ 208 a.a) partial recombinant protein with GST tag. MW of the GST tag alone is 26 KDa.
Dilution	WB~~1:500~1000 E~~N/A
Format	Clear, colorless solution in phosphate buffered saline, pH 7.2 .
Storage	Store at -20°C or lower. Aliquot to avoid repeated freezing and thawing.
Precautions	RAB6A Antibody (monoclonal) (M01) is for research use only and not for use in diagnostic or therapeutic procedures.

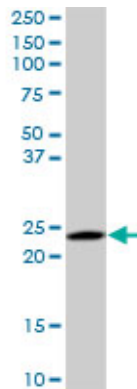
References

Rab and actomyosin-dependent fission of transport vesicles at the Golgi complex. Miserey-Lenkei S, et al. Nat Cell Biol, 2010 Jul. PMID 20562865. The localization of the Golgin GCC185 is independent of Rab6A/A' and Arl1. Houghton FJ, et al. Cell, 2009 Aug 21. PMID 19703403. Intracellular phospholipase A1gamma (iPLA1gamma) is a novel factor involved in coat protein complex I- and Rab6-independent retrograde transport between the endoplasmic reticulum and the Golgi complex. Morikawa RK, et al. J Biol Chem, 2009 Sep 25. PMID 19632984. Structural basis for recruitment of Rab6-interacting protein 1 to Golgi via a RUN domain. Recacha R, et al. Structure, 2009 Jan 14. PMID 19141279. Rab and Arl GTPase family members cooperate in the localization of the golgin GCC185. Burguete AS, et al. Cell, 2008 Jan 25. PMID 18243103.

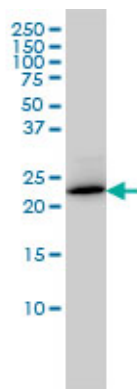
Images



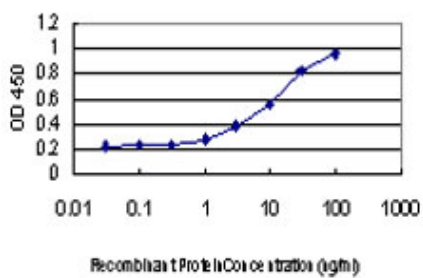
Antibody Reactive Against Recombinant Protein. Western Blot detection against Immunogen (36.63 KDa) .



RAB6A monoclonal antibody (M01), clone 3G3. Western Blot analysis of RAB6A expression in PC-12 ((Cat # AT3532a)



RAB6A monoclonal antibody (M01), clone 3G3 Western Blot analysis of RAB6A expression in HL-60 ((Cat # AT3532a)



Detection limit for recombinant GST tagged RAB6A is approximately 1ng/ml as a capture antibody.

Please note: All products are 'FOR RESEARCH USE ONLY. NOT FOR USE IN DIAGNOSTIC OR THERAPEUTIC PROCEDURES'.