

RAB7B Antibody (monoclonal) (M01)

Mouse monoclonal antibody raised against a partial recombinant RAB7B.

Catalog # AT3533a

Product Information

Application	WB, IP, E
Primary Accession	Q96AH8
Other Accession	NM_177403
Reactivity	Human
Host	mouse
Clonality	monoclonal
Isotype	IgG2a Kappa
Clone Names	3B3
Calculated MW	22511

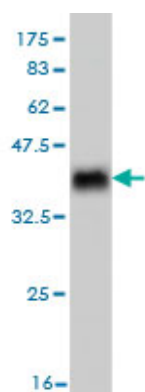
Additional Information

Gene ID	338382
Other Names	Ras-related protein Rab-7b, RAB7B
Target/Specificity	RAB7B (NP_796377, 100 a.a. ~ 199 a.a) partial recombinant protein with GST tag. MW of the GST tag alone is 26 KDa.
Dilution	WB~~1:500~1000 IP~~N/A E~~N/A
Format	Clear, colorless solution in phosphate buffered saline, pH 7.2 .
Storage	Store at -20°C or lower. Aliquot to avoid repeated freezing and thawing.
Precautions	RAB7B Antibody (monoclonal) (M01) is for research use only and not for use in diagnostic or therapeutic procedures.

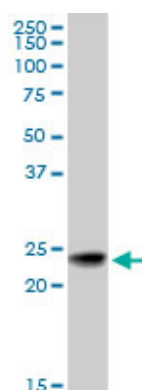
References

1. Clathrin-dependent mechanisms modulate the subcellular distribution of class C Vps/HOPS tether subunits in polarized and nonpolarized cells. Zlatic SA, Tornieri K, L'hernault SW, Faundez V. Mol Biol Cell. 2011 May;22(10):1699-715. Epub 2011 Mar 16. 2. Abnormal localization of leucine-rich repeat kinase 2 to the endosomal-lysosomal compartment in lewy body disease. Higashi S, Moore DJ, Yamamoto R, Minegishi M, Sato K, Togo T, Katsuse O, Uchikado H, Furukawa Y, Hino H, Kosaka K, Emson PC, Wada K, Dawson VL, Dawson TM, Arai H, Iseki E. J Neuropathol Exp Neurol. 2009 Sep;68(9):994-1005. 3. GIGYF2 is present in endosomal compartments in the mammalian brains and enhances IGF-1-induced ERK1/2 activation. Higashi S, Iseki E, Minegishi M, Togo T, Kabuta T, Wada K. J Neurochem. 2010 Jul 28. [Epub ahead of print]. 4. SPE-39 Family Proteins Interact with the HOPS Complex and Function in Lysosomal Delivery. Zhu GD, Salazar G, Zlatic SA, Fiza B, Doucette MM, Heilman CJ, Levey AI, Faundez V, L'hernault SW. Mol Biol Cell. 2009

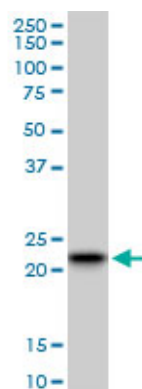
Images



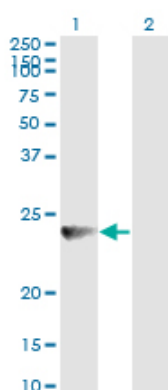
Antibody Reactive Against Recombinant Protein. Western Blot detection against Immunogen (36.74 KDa) .



RAB7B monoclonal antibody (M01), clone 3B3. Western Blot analysis of RAB7B expression in human kidney.



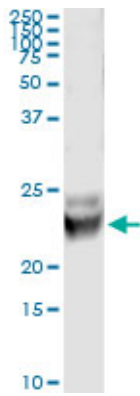
RAB7B monoclonal antibody (M01), clone 3B3. Western Blot analysis of RAB7B expression in A-431 (Cat # AT3533a)



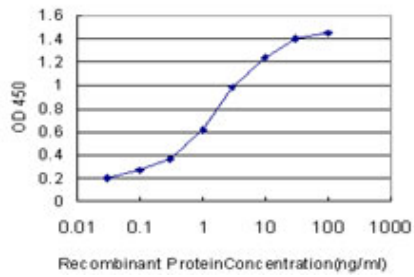
Western Blot analysis of RAB7B expression in transfected 293T cell line by RAB7B monoclonal antibody (M01), clone 3B3.

Lane 1: RAB7B transfected lysate (22.5 KDa).
Lane 2: Non-transfected lysate.

Immunoprecipitation of RAB7B transfected lysate using anti-RAB7B monoclonal antibody and Protein A Magnetic Bead ([U0007](#)), and immunoblotted with RAB7B MaxPab



rabbit polyclonal antibody.



Detection limit for recombinant GST tagged RAB7B is approximately 0.03ng/ml as a capture antibody.

Please note: All products are 'FOR RESEARCH USE ONLY. NOT FOR USE IN DIAGNOSTIC OR THERAPEUTIC PROCEDURES'.