

RAB7L1 Antibody (monoclonal) (M03)

Mouse monoclonal antibody raised against a full length recombinant RAB7L1.
Catalog # AT3534a

Product Information

Application	WB, E
Primary Accession	O14966
Other Accession	BC002585
Reactivity	Human
Host	mouse
Clonality	monoclonal
Isotype	IgG2b Kappa
Clone Names	2B8
Calculated MW	23155

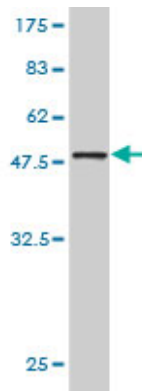
Additional Information

Gene ID	8934
Other Names	Ras-related protein Rab-7L1, Rab-7-like protein 1, Ras-related protein Rab-29, RAB29, RAB7L1
Target/Specificity	RAB7L1 (AAH02585, 1 a.a. ~ 203 a.a) full-length recombinant protein with GST tag. MW of the GST tag alone is 26 KDa.
Dilution	WB~~1:500~1000 E~~N/A
Format	Clear, colorless solution in phosphate buffered saline, pH 7.2 .
Storage	Store at -20°C or lower. Aliquot to avoid repeated freezing and thawing.
Precautions	RAB7L1 Antibody (monoclonal) (M03) is for research use only and not for use in diagnostic or therapeutic procedures.

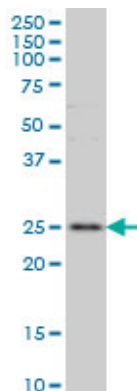
References

Genetic variability at the PARK16 locus. Tucci A, et al. Eur J Hum Genet, 2010 Aug 4. PMID 20683486. Genome-wide association study identifies common variants at four loci as genetic risk factors for Parkinson's disease. Satake W, et al. Nat Genet, 2009 Dec. PMID 19915576. Diversification of transcriptional modulation: large-scale identification and characterization of putative alternative promoters of human genes. Kimura K, et al. Genome Res, 2006 Jan. PMID 16344560. The status, quality, and expansion of the NIH full-length cDNA project: the Mammalian Gene Collection (MGC). Gerhard DS, et al. Genome Res, 2004 Oct. PMID 15489334. A protein interaction framework for human mRNA degradation. Lehner B, et al. Genome Res, 2004 Jul. PMID 15231747.

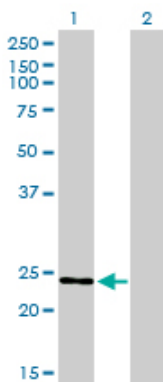
Images



Antibody Reactive Against Recombinant Protein. Western Blot detection against Immunogen (48.07 KDa) .

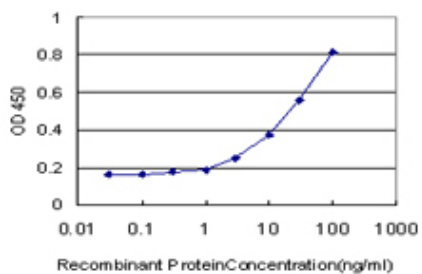


RAB7L1 monoclonal antibody (M03), clone 2B8 Western Blot analysis of RAB7L1 expression in Jurkat ((Cat # AT3534a)



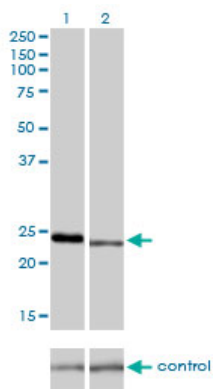
Western Blot analysis of RAB7L1 expression in transfected 293T cell line by RAB7L1 monoclonal antibody (M03), clone 2B8.

Lane 1: RAB7L1 transfected lysate(23.2 KDa).
Lane 2: Non-transfected lysate.



Detection limit for recombinant GST tagged RAB7L1 is approximately 1ng/ml as a capture antibody.

Western blot analysis of RAB7L1 over-expressed 293 cell line, cotransfected with RAB7L1 Validated Chimera RNAi ((Cat # AT3534a)



Please note: All products are 'FOR RESEARCH USE ONLY. NOT FOR USE IN DIAGNOSTIC OR THERAPEUTIC PROCEDURES'.